



Security Removable Media Manager

Active Directory Installation Guide

Version 9.11.35.0

(March 2025)

Protect your valuable data



secRMM Active Directory Installation Guide

© 2011 Squadra Technologies, LLC. ALL RIGHTS RESERVED.

This guide contains proprietary information protected by copyright. The software described in this guide is furnished under a software license or nondisclosure agreement. This software may be used or copied only in accordance with the terms of the applicable agreement. No part of this guide may be reproduced or transmitted in any form or by any means, electronic or mechanical, including photocopying and recording for any purpose other than the purchaser's personal use without the written permission of Squadra Technologies, LLC.

If you have any questions regarding your potential use of this material, contact:

Squadra Technologies, LLC
7575 West Washington Ave
Suite 127-252
Las Vegas, NV 89128 USA
www.squadratechnologies.com
email: info@squadratechnologies.com

Refer to our Web site for regional and international office information.

TRADEMARKS

Squadra Technologies, secRMM are trademarks and registered trademarks of Squadra Technologies, LLC. Other trademarks and registered trademarks used in this guide are property of their respective owners.

Disclaimer

The information in this document is provided in connection with Squadra Technologies products. No license, express or implied, by estoppel or otherwise, to any intellectual property right is granted by this document or in connection with the sale of Squadra Technologies products. EXCEPT AS SET FORTH IN Squadra Technologies's TERMS AND CONDITIONS AS SPECIFIED IN THE LICENSE AGREEMENT FOR THIS PRODUCT, Squadra Technologies ASSUMES NO LIABILITY WHATSOEVER AND DISCLAIMS ANY EXPRESS, IMPLIED OR STATUTORY WARRANTY RELATING TO ITS PRODUCTS INCLUDING, BUT NOT LIMITED TO, THE IMPLIED WARRANTY OF MERCHANTABILITY, FITNESS FOR A PARTICULAR PURPOSE, OR NON-INFRINGEMENT. IN NO EVENT SHALL Squadra Technologies BE LIABLE FOR ANY DIRECT, INDIRECT, CONSEQUENTIAL, PUNITIVE, SPECIAL OR INCIDENTAL DAMAGES (INCLUDING, WITHOUT LIMITATION, DAMAGES FOR LOSS OF PROFITS, BUSINESS INTERRUPTION OR LOSS OF INFORMATION) ARISING OUT OF THE USE OR INABILITY TO USE THIS DOCUMENT, EVEN IF Squadra Technologies HAS BEEN ADVISED OF THE POSSIBILITY OF SUCH DAMAGES. Squadra Technologies makes no representations or warranties with respect to the accuracy or completeness of the contents of this document and reserves the right to make changes to specifications and product descriptions at any time without notice. Squadra Technologies does not make any commitment to update the information contained in this document.

Squadra Technologies Excel AddIn Administrator Guide
Created - August 2011

Contents

INTRODUCTION	4
INSTALLATION OF SECRMM USING AD GPO.....	4
PREPARE THE ACTIVE DIRECTORY SERVER	4
DOWNLOAD THE SECRMM SOFTWARE	5
DOWNLOAD THE MICROSOFT PREREQUISITE SOFTWARE.....	7
<i>Checking for the Microsoft Prerequisite software.....</i>	<i>7</i>
CREATING GROUP POLICY OBJECTS.....	8
<i>secRMM installation</i>	<i>10</i>
Customizing the installation.....	28
Linking the installation GPO.....	29
<i>secRMM License file.....</i>	<i>30</i>
Linking the license file GPO.....	43
TROUBLESHOOTING.....	45
GPUPDATE AND GPRESULT	45
WINDOWS 7	48
CONTACTING SQUADRA TECHNOLOGIES SUPPORT	48
ABOUT SQUADRA TECHNOLOGIES, LLC.....	49

secRMM Active Directory Installation Guide

Introduction

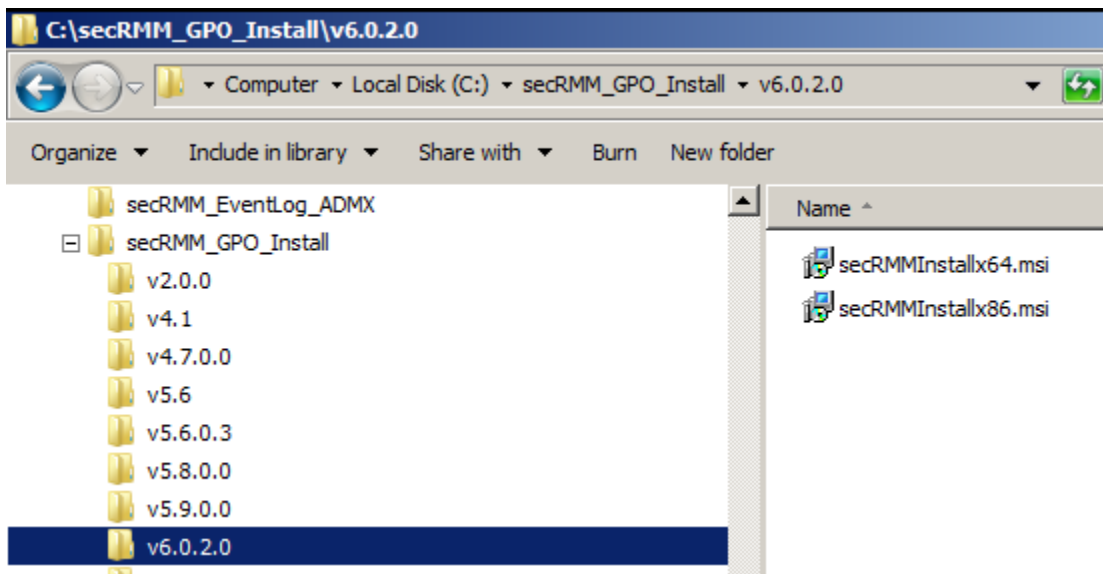
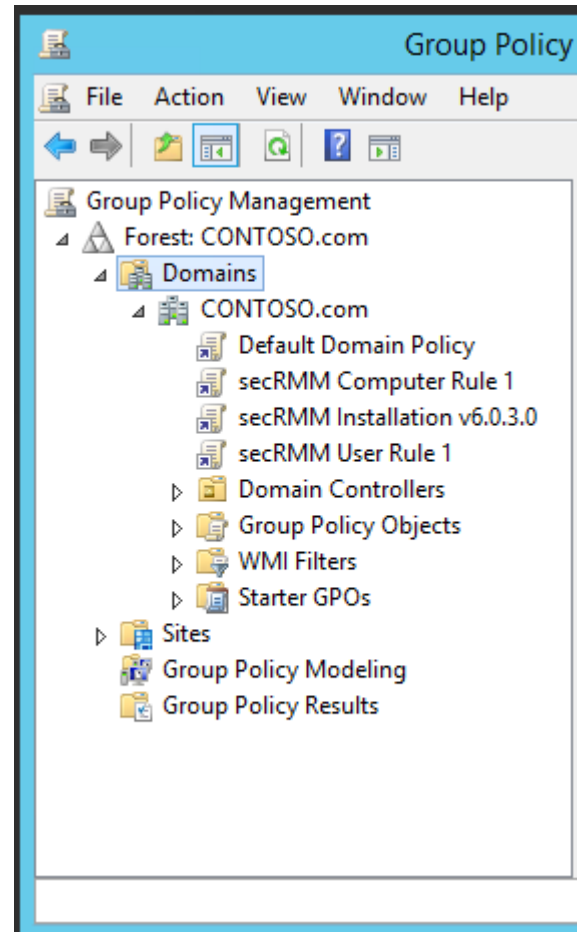
Security Removable Media Manager (secRMM) can be installed (deployed) in your domain using Microsoft Active Directory.

NOTE: This document is 95% screenshots so don't get discouraged with the number of pages! Hopefully you will find that a picture is really worth 1000 words.

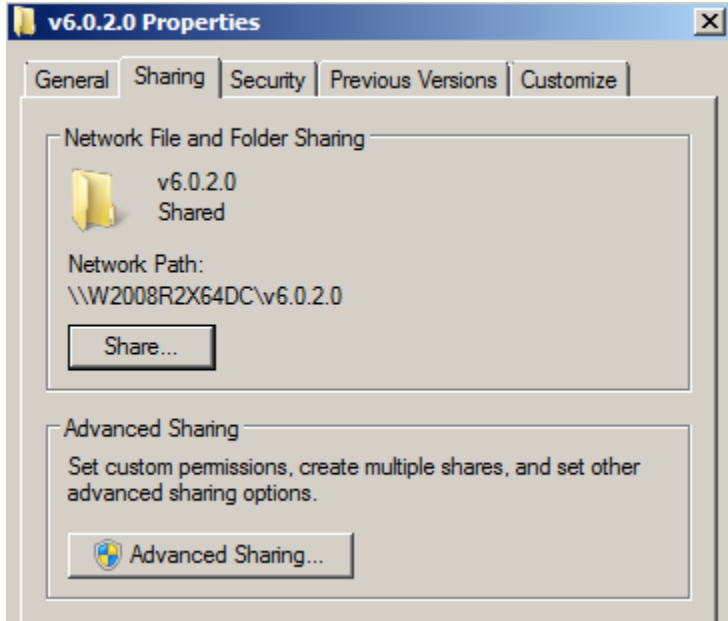
Installation of secRMM using AD GPO

Prepare the Active Directory server

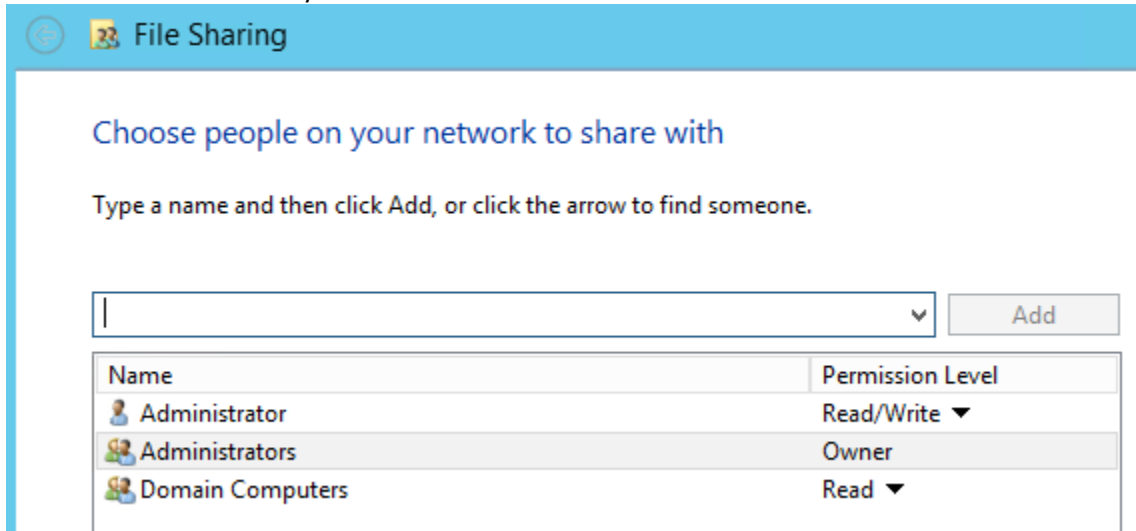
You should put the msi files you downloaded in the previous section on a server share, in a separate folder. The documentation below will assume the folder is C:\secRMM_GPO_Install\v6.0.2.0 (please use the correct secRMM version number if you use the version within the folder name). We will share the folder C:\secRMM_GPO_Install\v6.0.2.0 so Active Directory can access it. In the screen shot below, you can see the name of the server is \\W2008R2X64DC and the share for C:\secRMM_GPO_Install\v6.0.2.0 is named v6.0.2.0. Therefore, other computers can access this share at \\W2008R2X64DC\v6.0.2.0.



secRMM Active Directory Installation Guide



Note the share permission below. We allow the “Domain Computers” read access to this share. This will allow Active Directory access to the folder¹



Note that you should not just specify a server UNC path, it must be a shared folder from a server in your domain. For GPOs, using a UNC path (and not a server shared folder) will most likely cause the GPO software installation to fail with an error code of 1602 (seen in the system event log).

Download the secRMM software

¹ The security in your environment might be set up differently. If this is the case and you are unsure of how to allow Active Directory to access this folder, please contact Squadra Technologies support for assistance in setting this up.

secRMM Active Directory Installation Guide

Now that the directory structure has been created, we will download the files to go into the directories. Go to <http://www.squadratechnologies.com>. Follow the screen shot below to get to the secRMM download page.

The screenshot shows a web browser window with the URL www.squadratechnologies.com/Products/secRMM/secRMMDownloads.aspx. The Squadra Technologies logo is visible, along with a navigation menu containing 'home', 'software', 'hardware', 'services', 'partners', and 'company'. The 'software' menu item is highlighted with a blue box and the number 1. Below it, the 'secRMM' sub-menu item is highlighted with a blue box and the number 2. The main heading 'secRMM Downloads' is displayed in large red text. On the left sidebar, the 'Download' link is highlighted with a blue box and the number 3. The main content area shows a breadcrumb trail 'Home >> secRMM >> Downloads' and a red heading 'Please specify your information to download secRMM.' Below this, there is a form with several input fields: 'First Name' (containing 'Bill'), 'Last Name' (containing 'Gates'), 'E-mail' (containing 'Bill@microsoft.com'), 'Company', 'Phone #', and 'Country'. The 'Submit' button at the bottom of the form is highlighted with a blue box and the number 5. A small image of a padlock and a USB drive is shown in the bottom left corner of the sidebar.

If you have 64-bit and 32-bit computers in your environment, make sure to download both of the installation files. Each zip file that you download will contain the Windows installation file (the file will have a file extension of MSI). secRMMInstallx64.zip will contain secRMMInstallx64.msi and

secRMM Active Directory Installation Guide

secRMMInstallx86.zip will contain secRMMInstallx86.msi.

Please select a link(s) from the list below. Fully functional 30 day free trial.

Item	Download link
Prerequisite: Microsoft Universal C Runtime Update 3 (current MS patches contain this)	Microsoft download center
secRMM x64 install	secRMMInstallx64.zip
secRMM x86 install	secRMMInstallx86.zip

At the bottom of the secRMM download page, it will always show you the secRMM version you are downloading. You should write the version number down so that when we perform the AD GPO steps below we will have the secRMM version number.

Current Version **9.8.11.0** Posted Date: 12/22/2017

Extract the zip files and put the msi files into the share we created above.

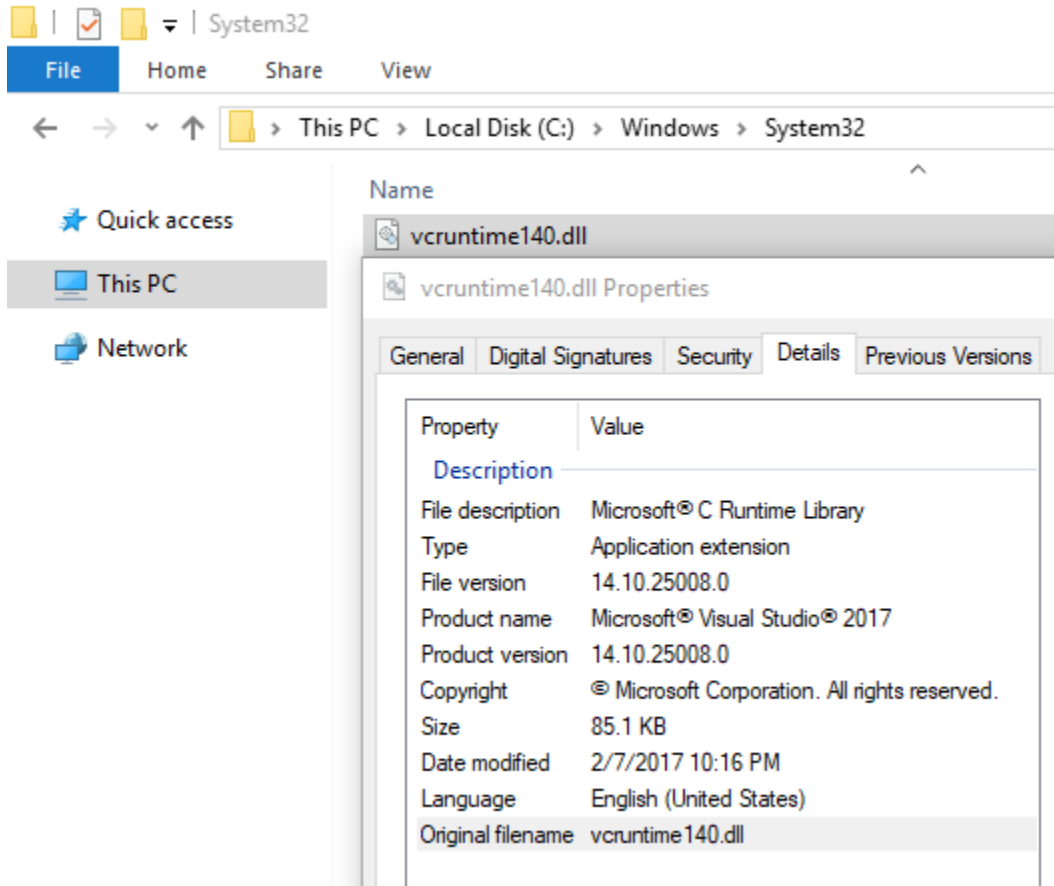
Download the Microsoft Prerequisite software

secRMM relies on the Microsoft Visual C++ Redistributable dlls. Currently, secRMM is using the “Microsoft Visual C++ 2015 Redistributable Update 3”. If you are keeping current with Microsoft updates, this should already be installed on your systems. If your systems do not already have “Microsoft Visual C++ 2015 Redistributable Update 3” installed (see below on how to check if you have it already installed), please refer to the “**secRMM Prerequisites Installation Guide**” available from the Squadra Technologies web site (the same page where you received this installation guide).

Checking for the Microsoft Prerequisite software

To see if the “Microsoft Visual C++ 2015 Redistributable Update 3” dlls are already on your systems, you can check in the Windows\system32 directory for a dll named vcruntime140.dll.

secRMM Active Directory Installation Guide

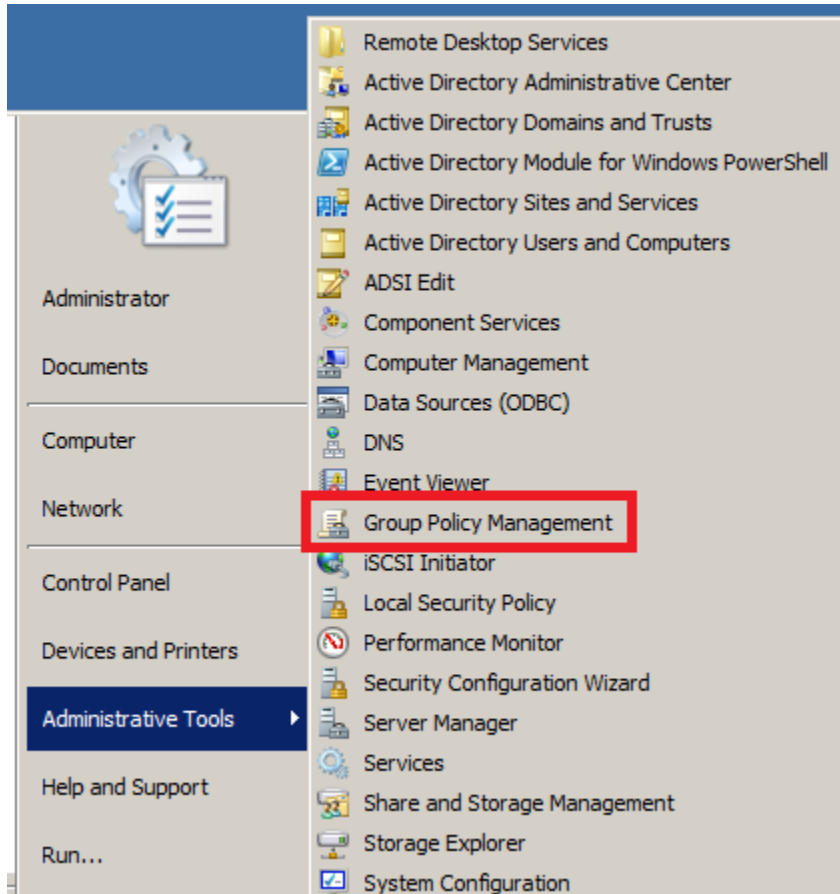


If the “Microsoft Visual C++ 2015 Redistributable Update 3” dlls are not on your systems and you install secRMM, secRMM will generate an error (“Provider load failure”) and will not be able to function properly.

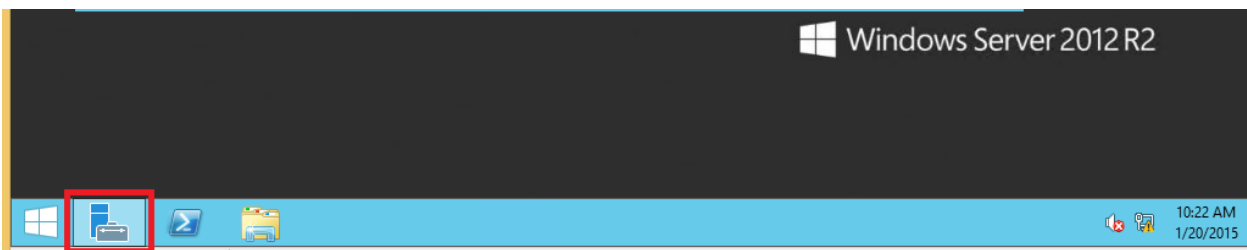
Creating Group Policy Objects

If you are on a server prior to Windows 2012, you will access the “Group Policy Management” MMC as shown below. If you are on Windows 2012 or greater, please use the next screenshot.

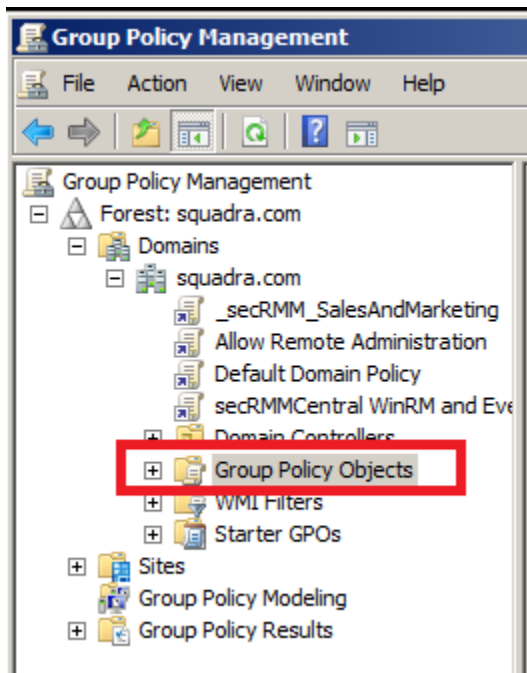
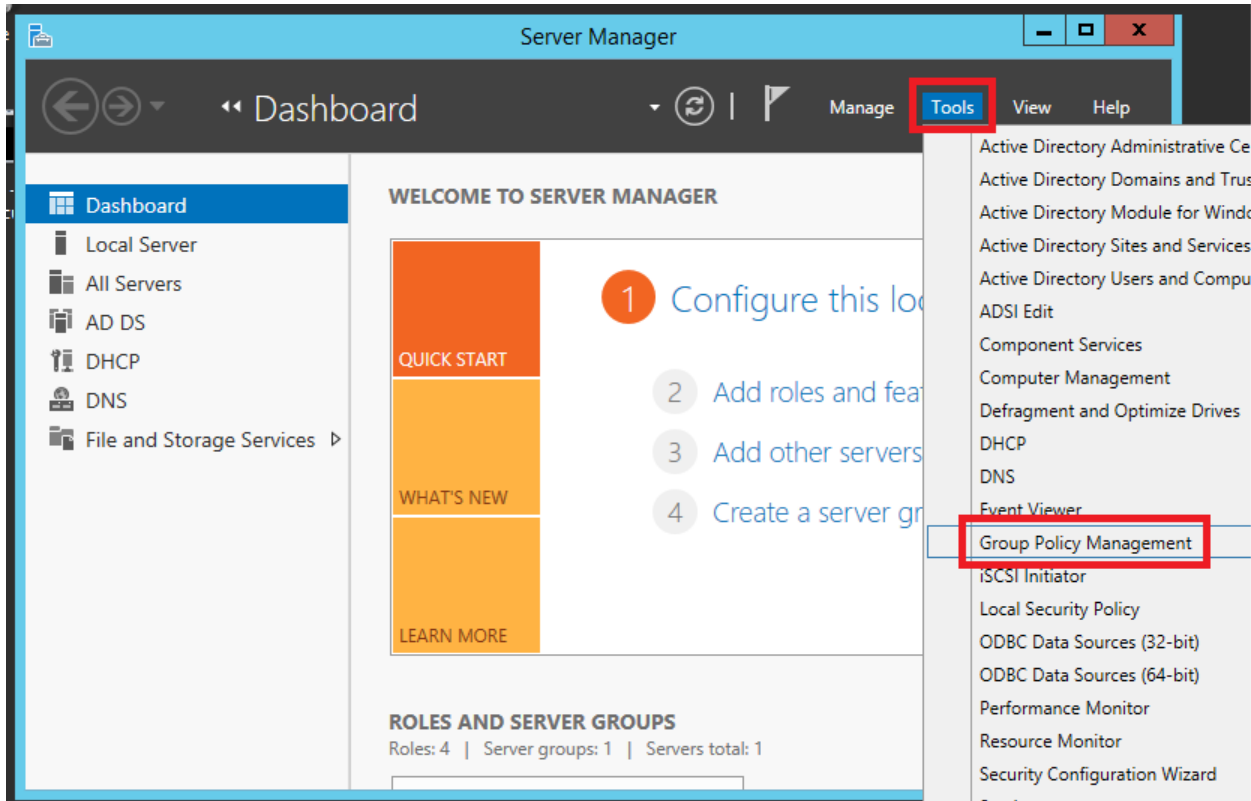
secRMM Active Directory Installation Guide



If you are on a Windows 2012 server, you will access the “Group Policy Management” MMC from the “Server Manager” Window as shown in the screen shots below.

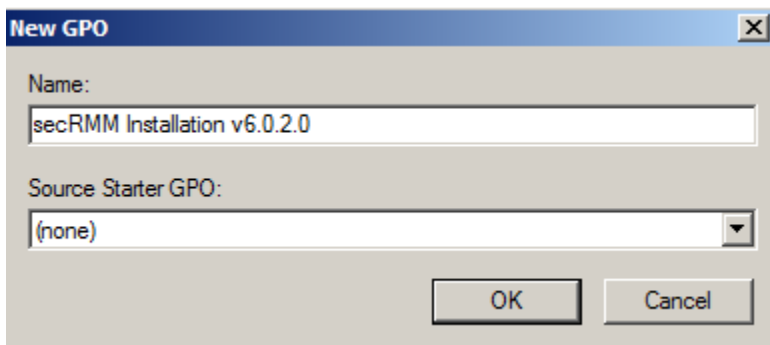
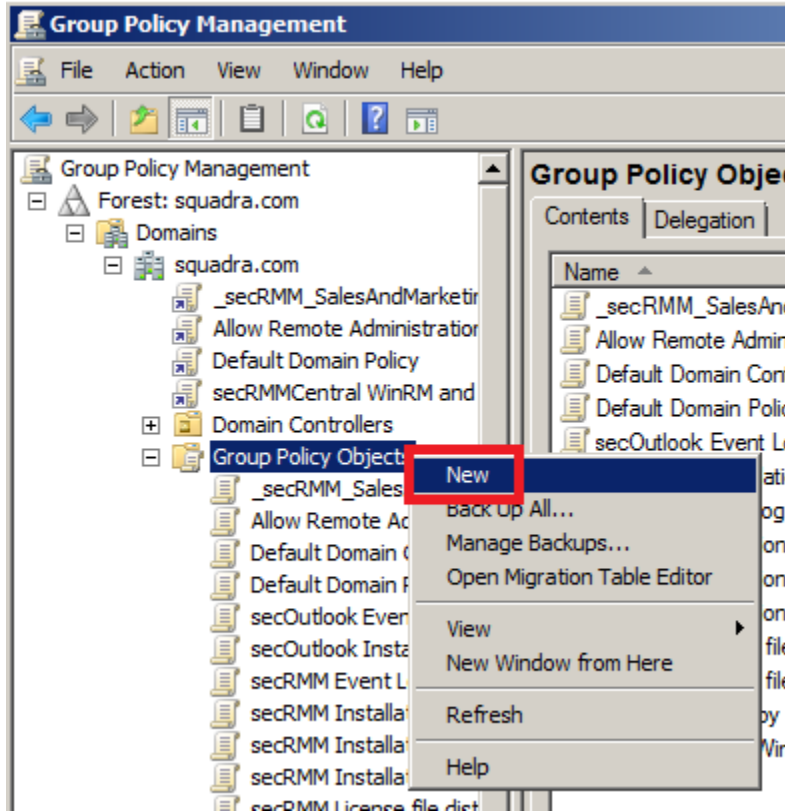


secRMM Active Directory Installation Guide



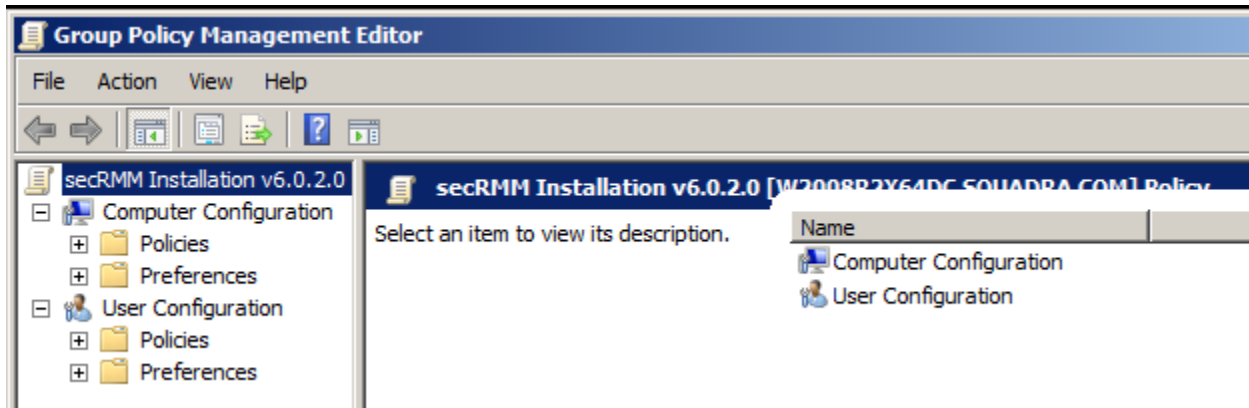
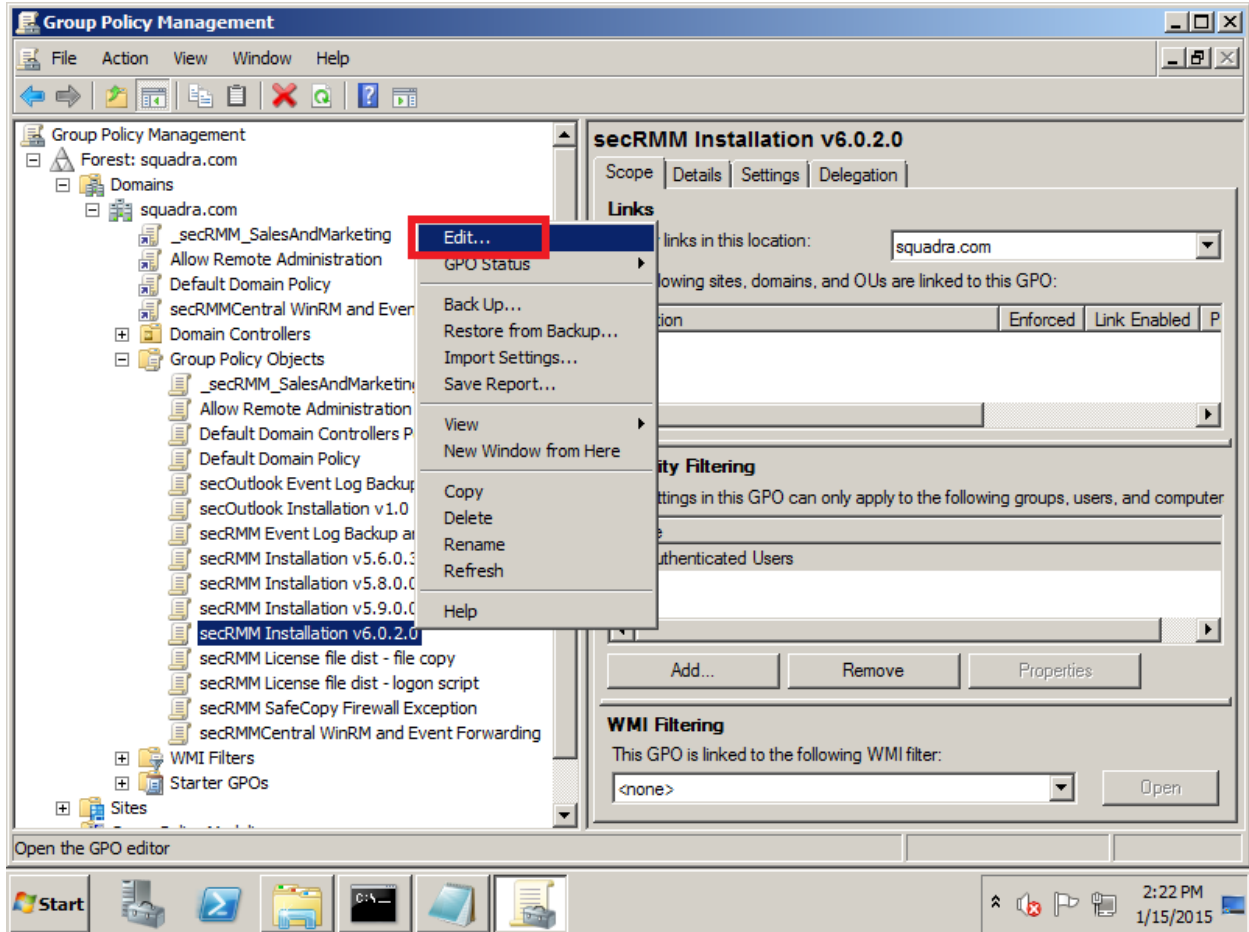
secRMM installation

secRMM Active Directory Installation Guide

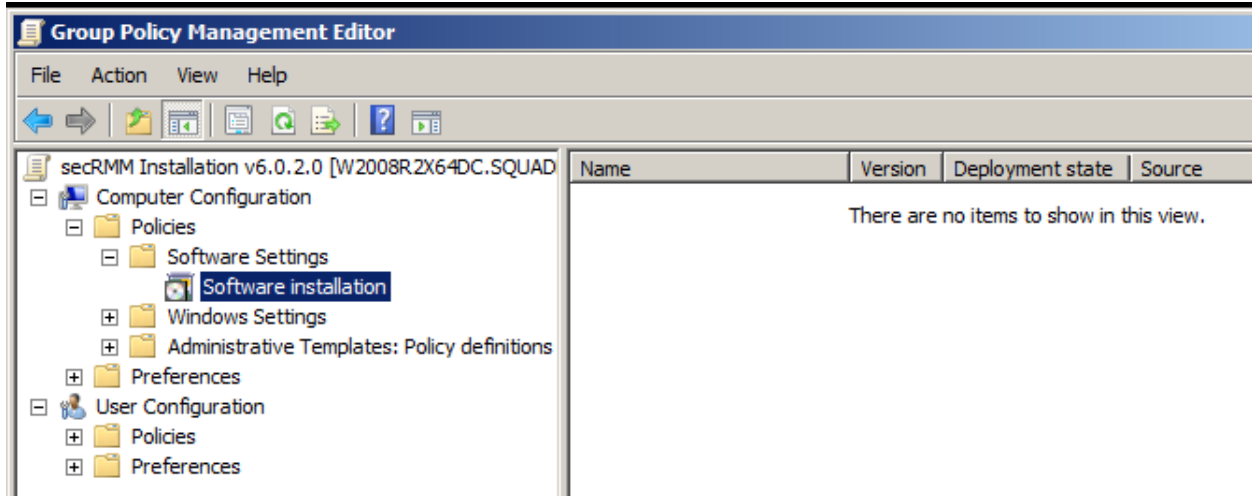


Now in the list of defined GPOs, you will see the new GPO.
Right mouse click on the new GPO and in the popup menu, select Edit.

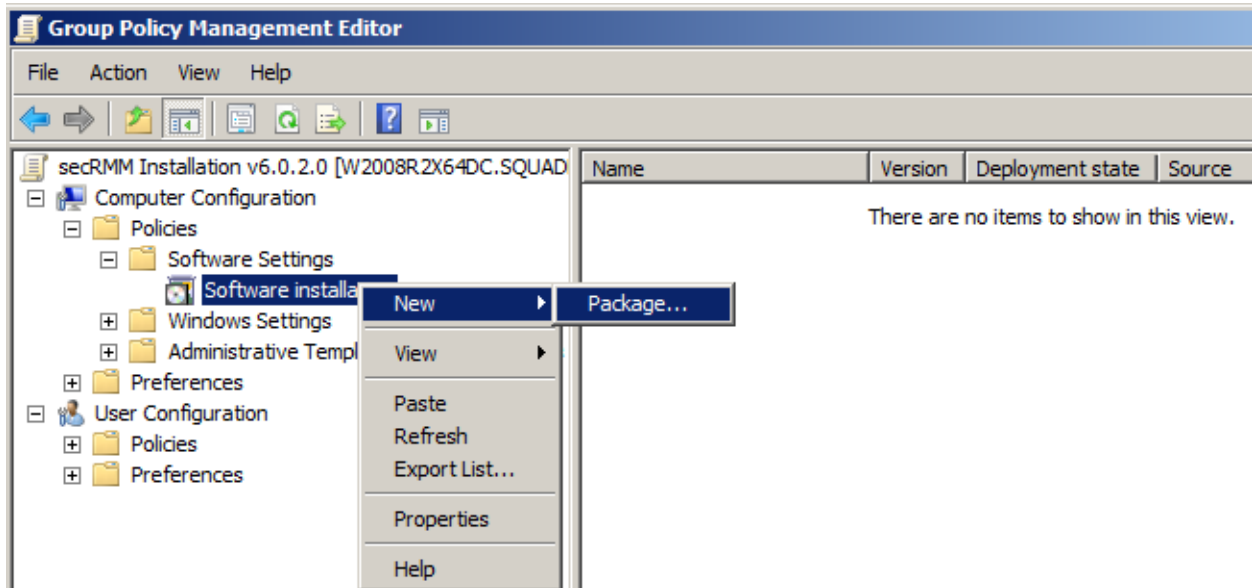
secRMM Active Directory Installation Guide



secRMM Active Directory Installation Guide

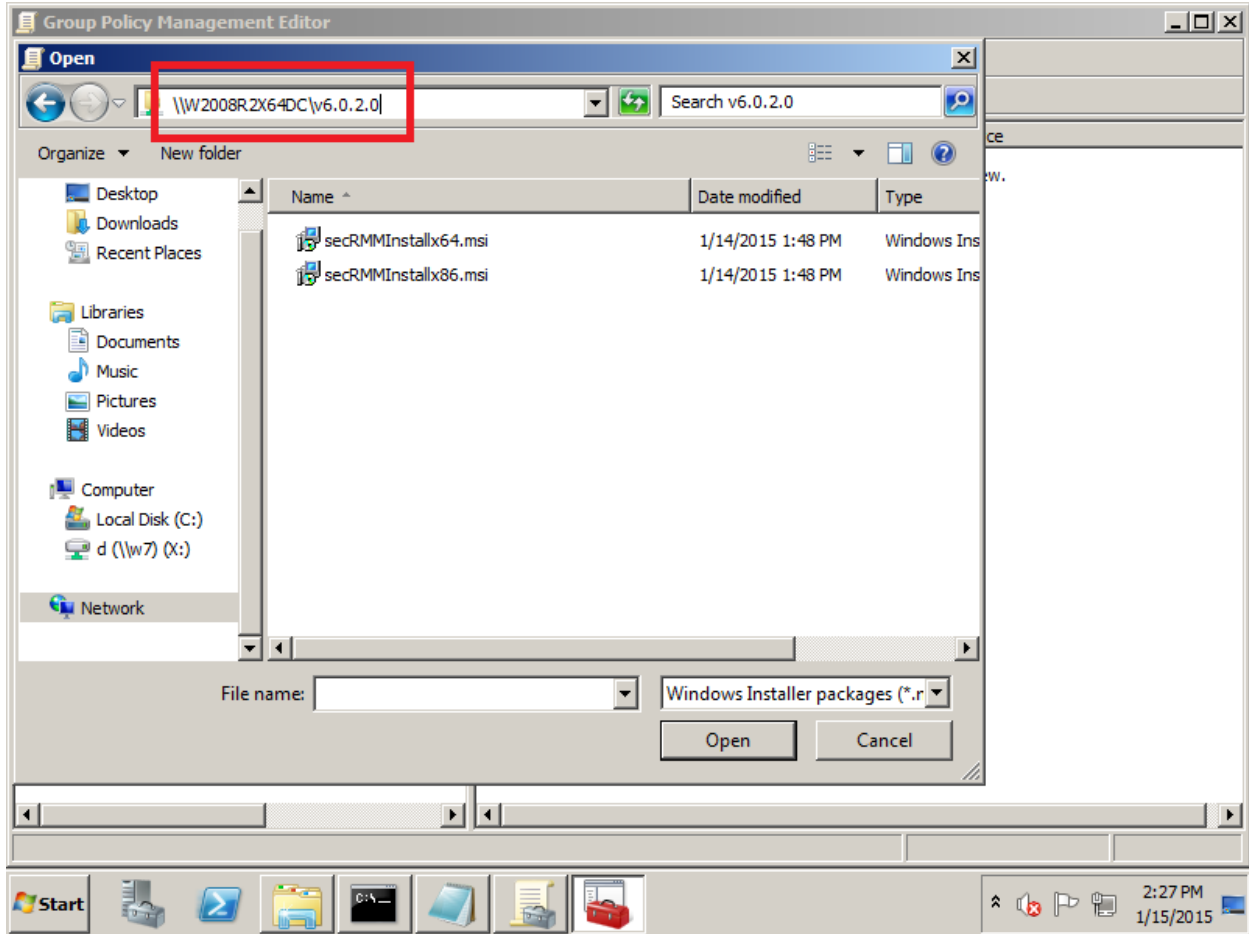


Right mouse click on “Software installation” and in the popup menu, select New->Package.

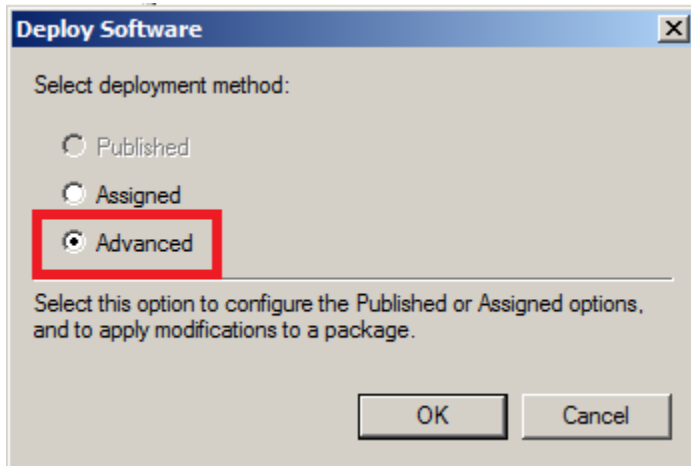
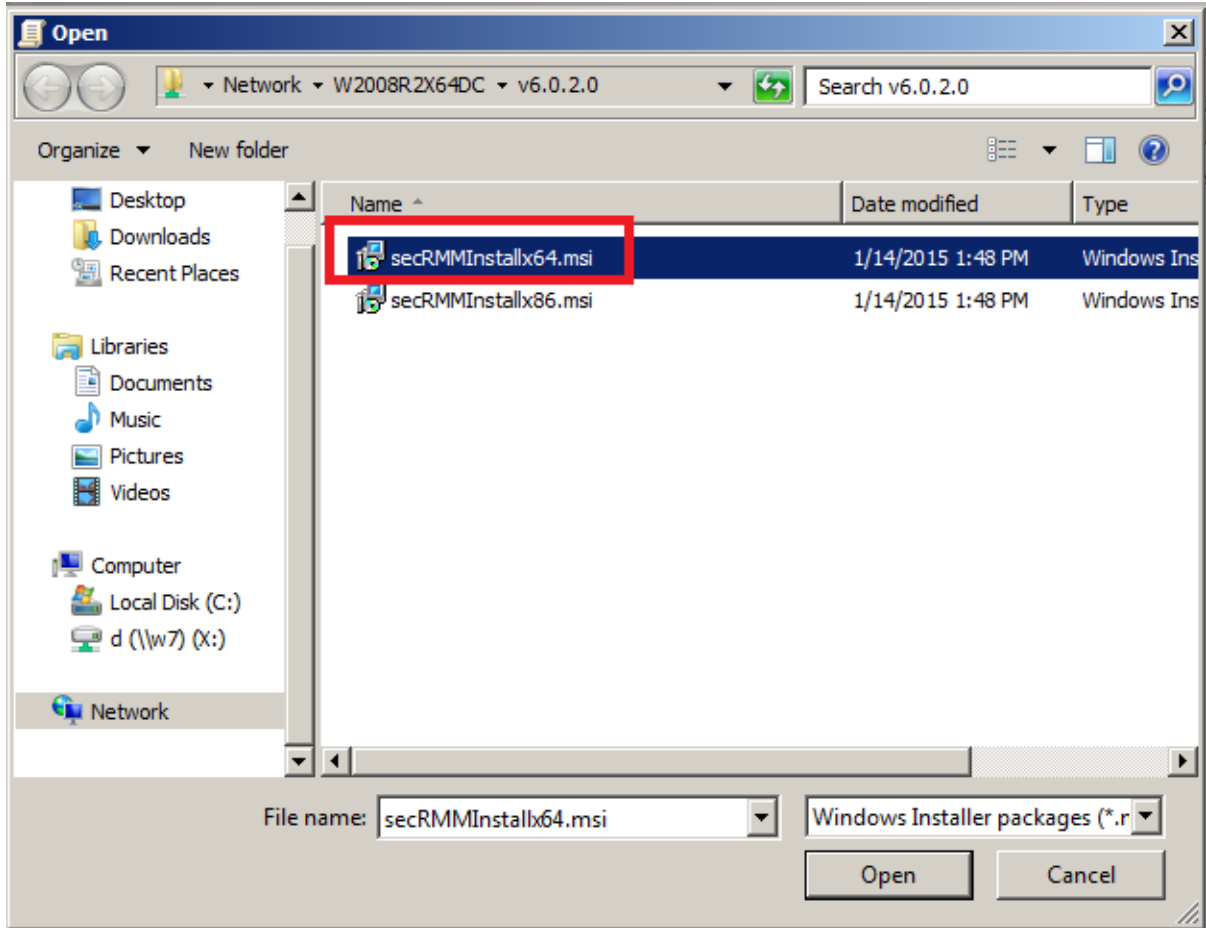


Go to the network share you created above (note: make sure you do not use the local drive here...you MUST use the network share name) and select the secRMMInstallx64.msi file.

secRMM Active Directory Installation Guide

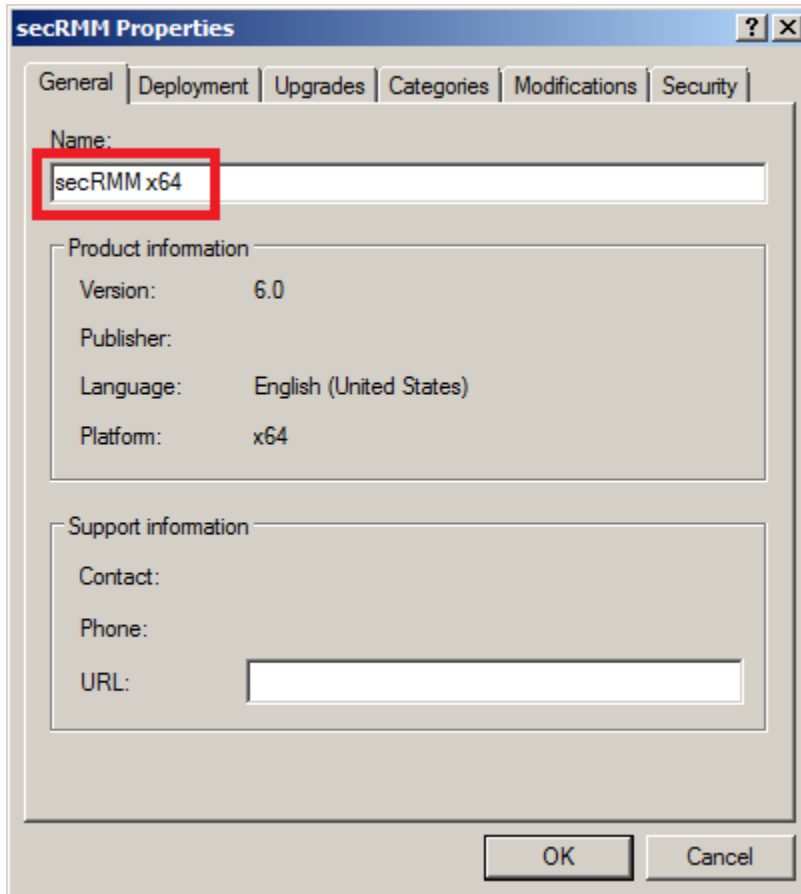


secRMM Active Directory Installation Guide

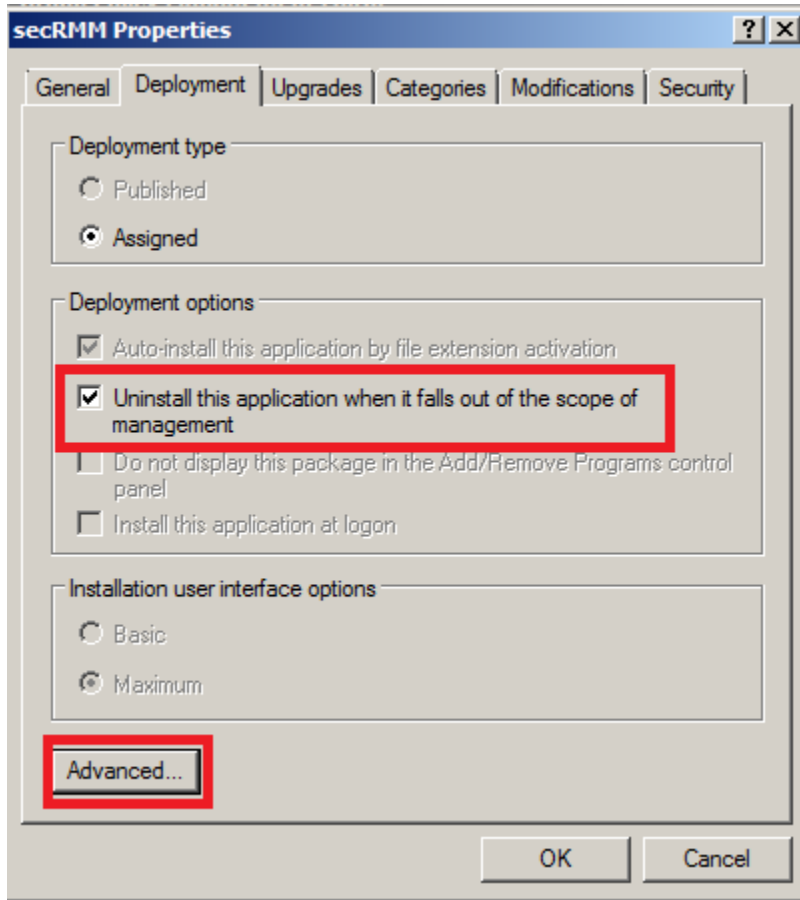


On the General tab, change the name from "secRMM" to "secRMM x64".

secRMM Active Directory Installation Guide

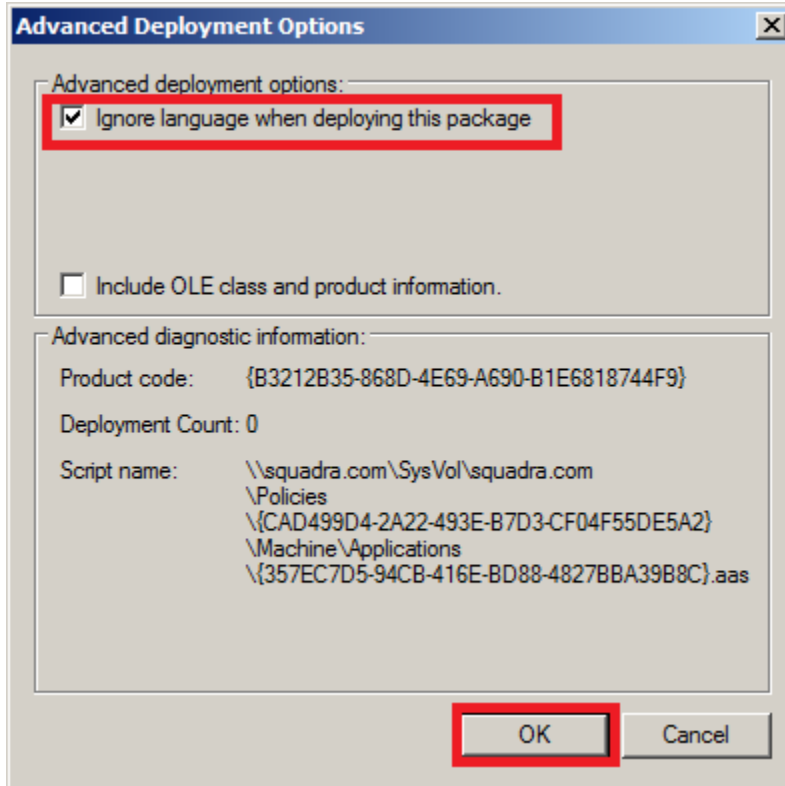


secRMM Active Directory Installation Guide



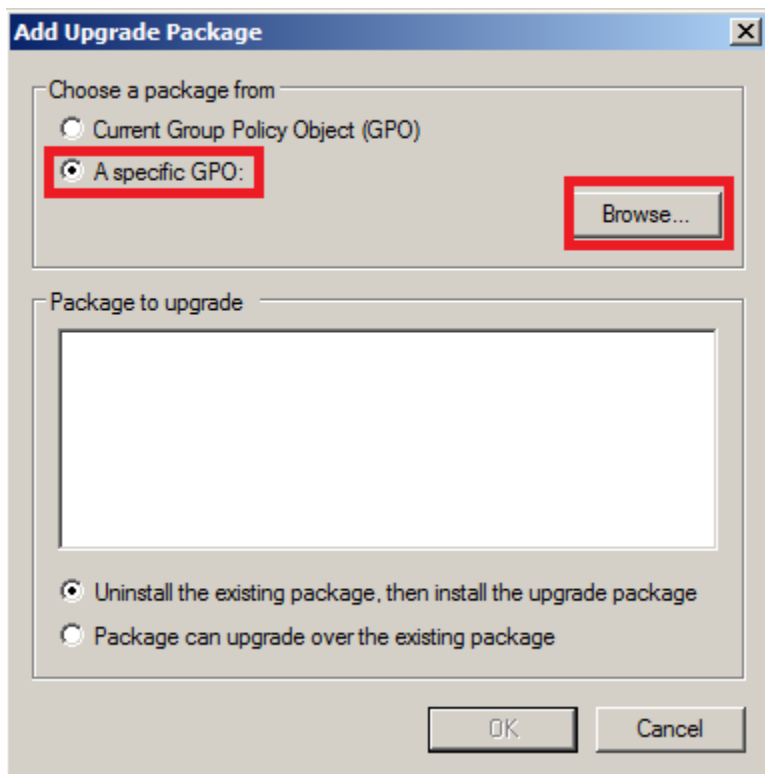
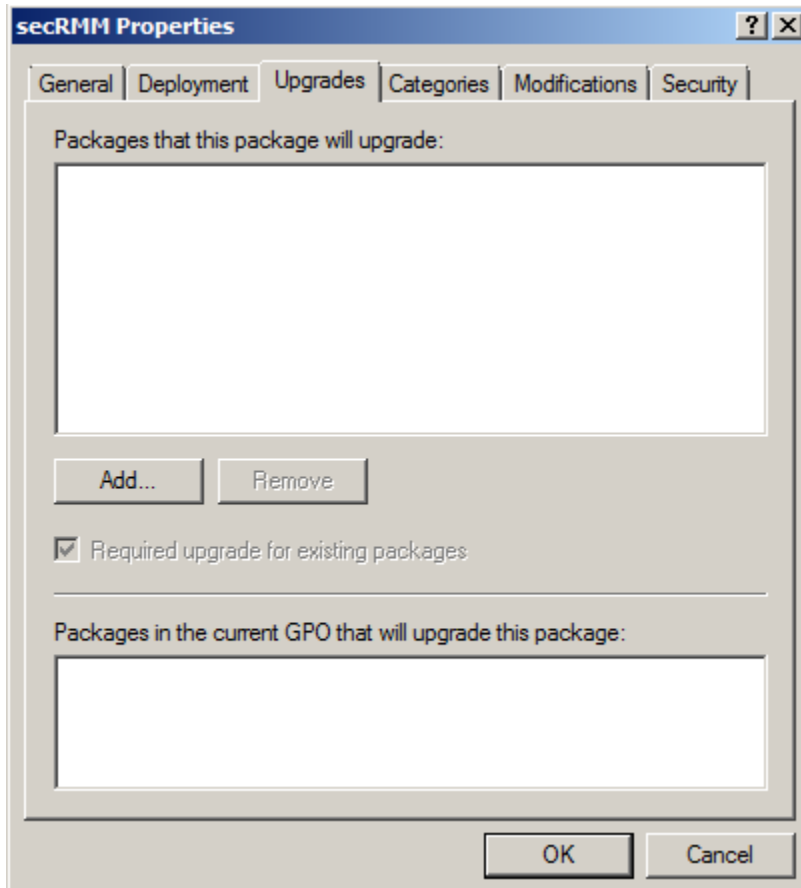
When you click the “Advanced” button, another dialog will open:

secRMM Active Directory Installation Guide



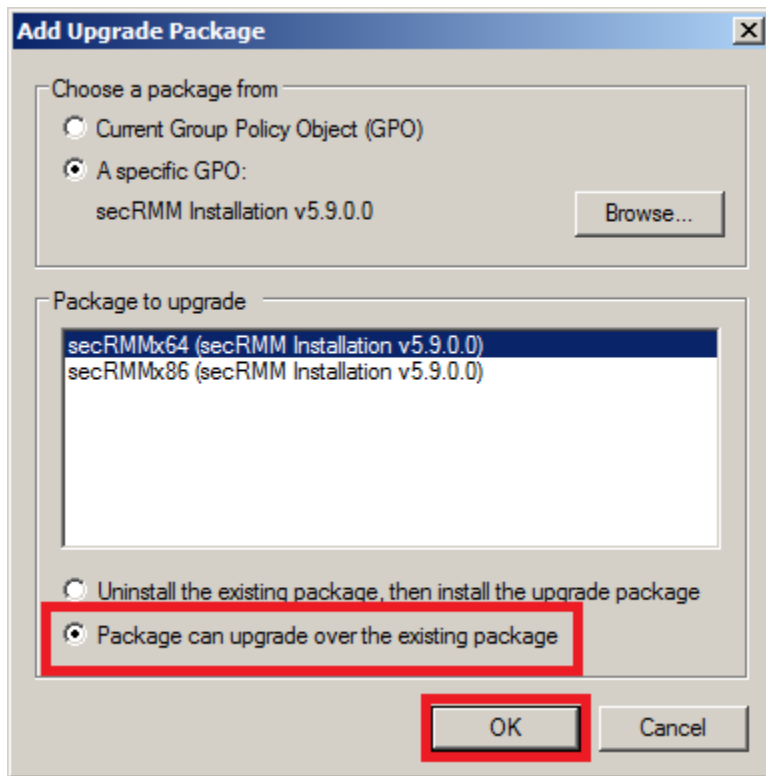
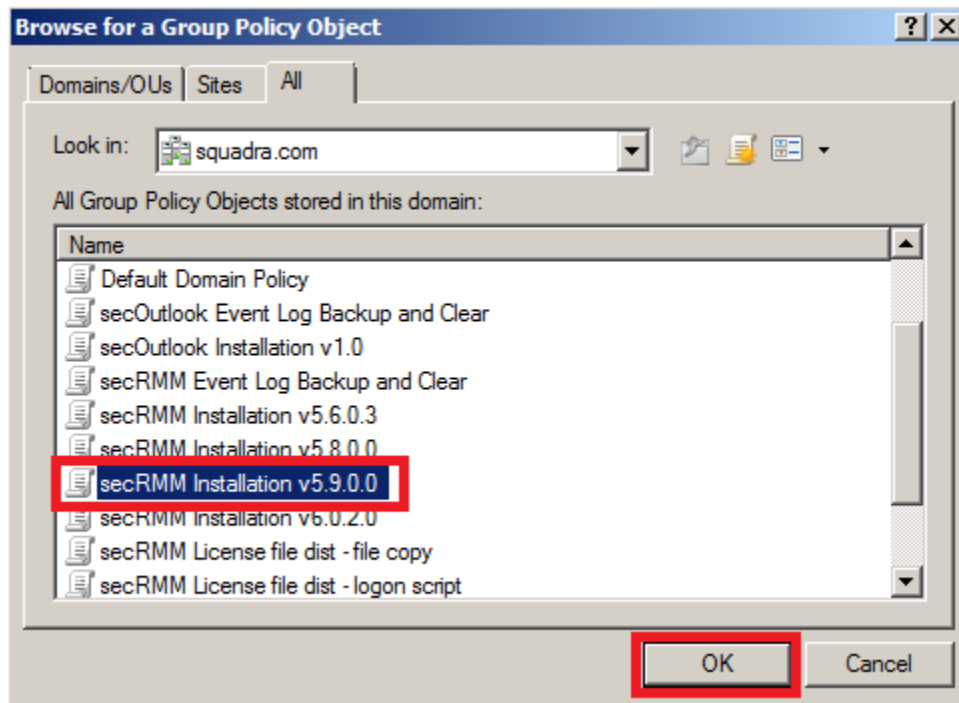
If you have already deployed secRMM and are upgrading, click the “Upgrades” tab and add the previous secRMM installation GPO. If you are deploying secRMM for the first time, you will skip this step.

secRMM Active Directory Installation Guide

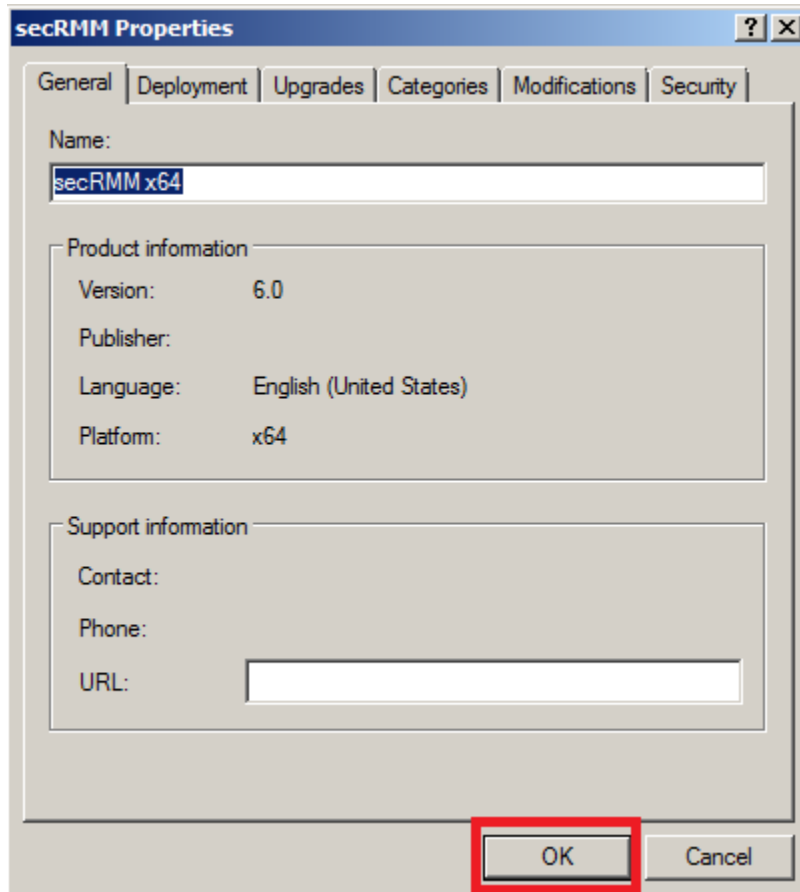


secRMM Active Directory Installation Guide

In the screenshot below, we are upgrading from secRMM version 5.9.0.0. The secRMM version deployed in your environment may be different. Chose the version that is deployed in your environment.



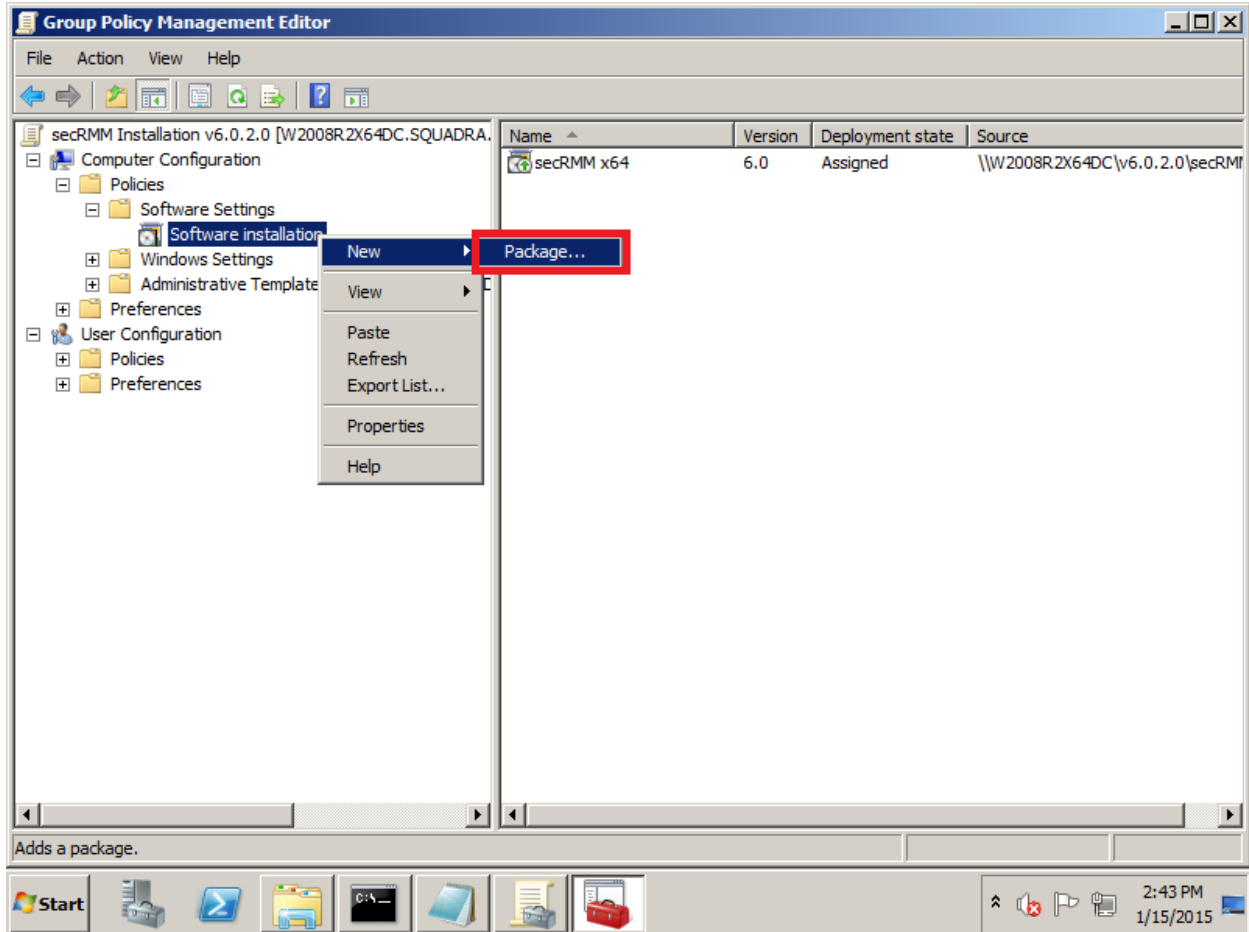
secRMM Active Directory Installation Guide



Now we can add the secRMMInstallx86 (i.e. 32 bit) file.

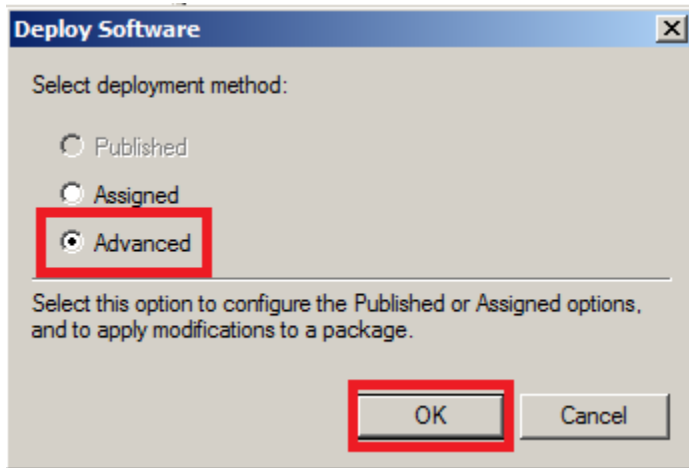
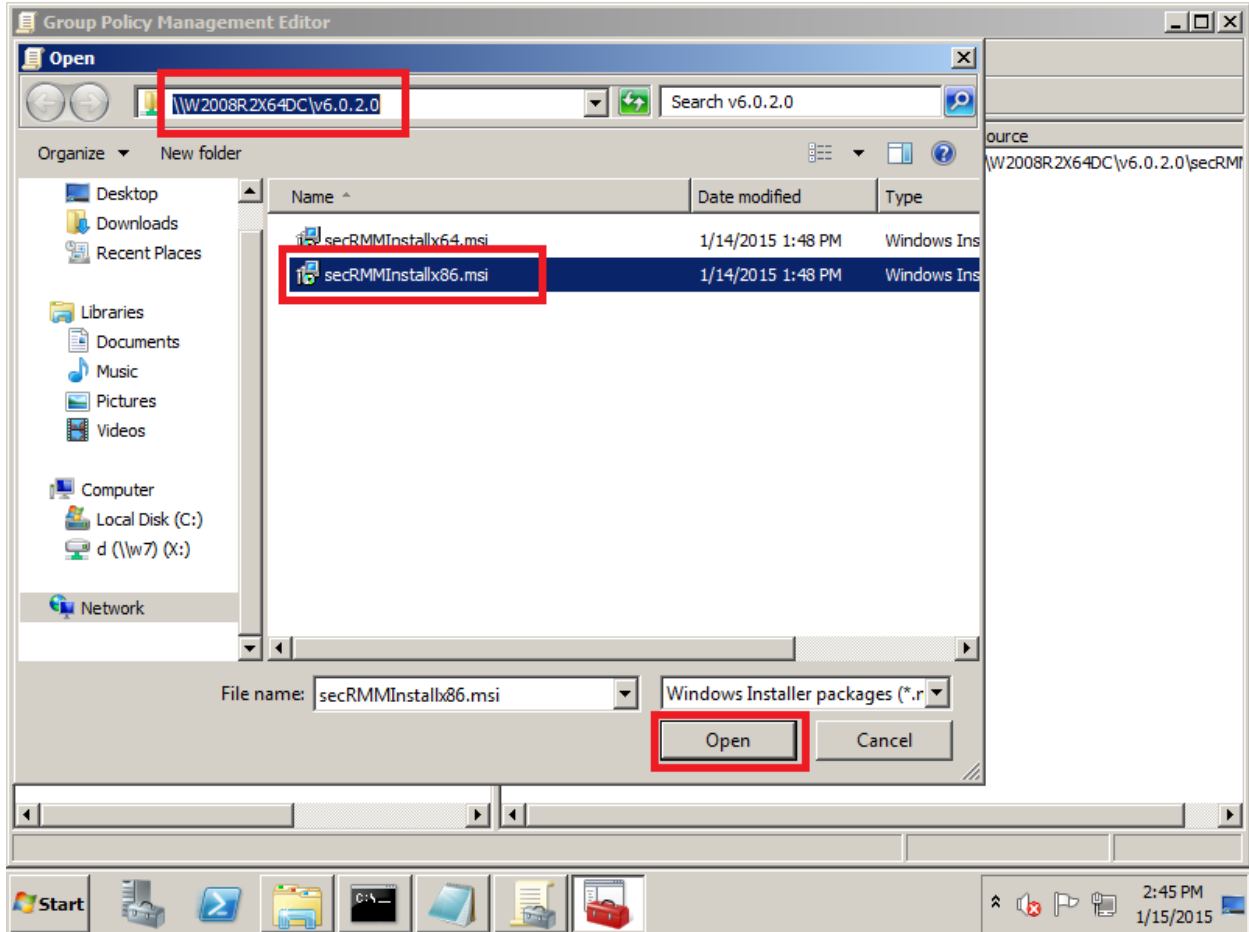
Right mouse click on "Software installation" again and in the popup menu, select New->Package.

secRMM Active Directory Installation Guide



Go to the network share you created above (note: make sure you do not use the local drive here...you MUST use the network share name) and select the secRMMInstallx86.msi file.

secRMM Active Directory Installation Guide



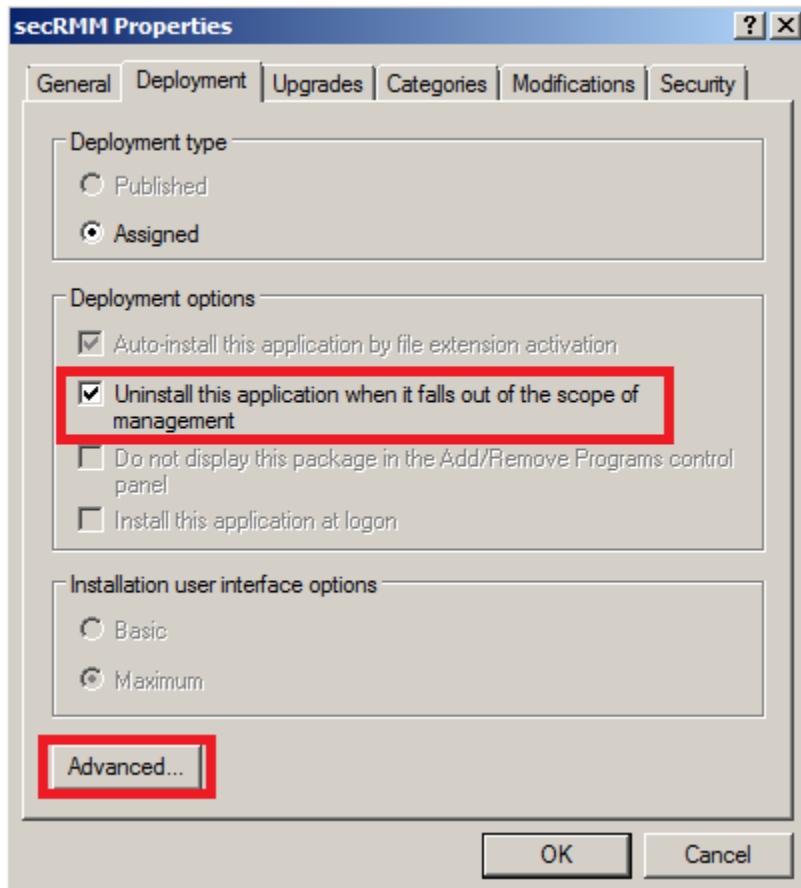
On the General tab, change the name from “secRMM” to “secRMM x86”.

secRMM Active Directory Installation Guide

The screenshot shows the 'secRMM Properties' dialog box with the 'General' tab selected. The 'Name' field is highlighted with a red box and contains the text 'secRMM x86'. Below the name field, there are two sections: 'Product information' and 'Support information'. The 'Product information' section contains the following fields: 'Version: 6.0', 'Publisher:' (empty), 'Language: English (United States)', and 'Platform: x86'. The 'Support information' section contains the following fields: 'Contact:' (empty), 'Phone:' (empty), and 'URL:' (empty). At the bottom of the dialog box, there are 'OK' and 'Cancel' buttons.

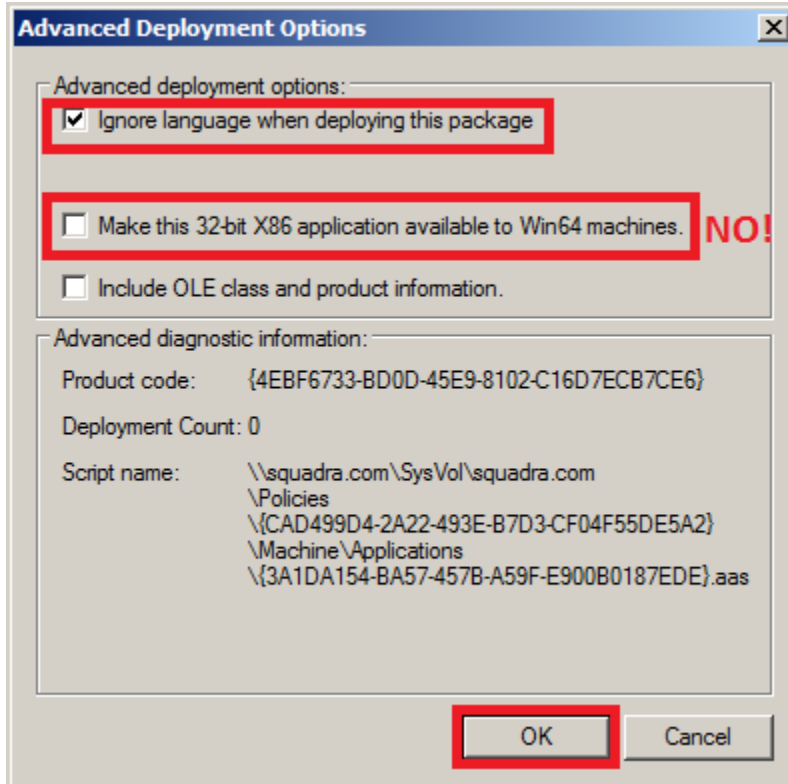
Field	Value
Name	secRMM x86
Version	6.0
Publisher	
Language	English (United States)
Platform	x86
Contact	
Phone	
URL	

secRMM Active Directory Installation Guide



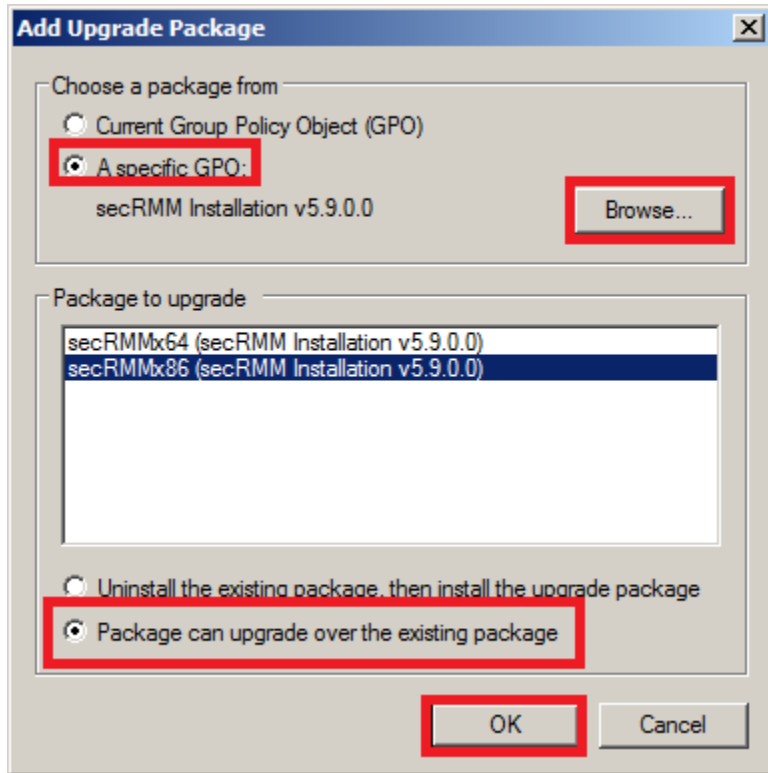
Make sure that you **UNCHECK** the “Make this 32-bit X86 application available to Win64 machines.” checkbox.

secRMM Active Directory Installation Guide

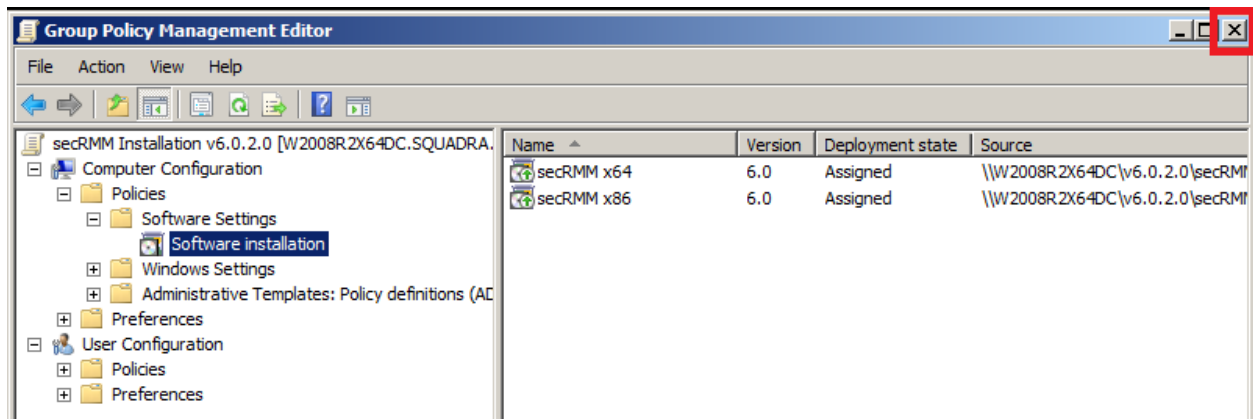


If you have already deployed secRMM and are upgrading, click the “Upgrades” tab and add the previous secRMM installation GPO (the screen shots will be mostly the same as above so we will not list them all below). If you are deploying secRMM for the first time, you will skip this step.

secRMM Active Directory Installation Guide

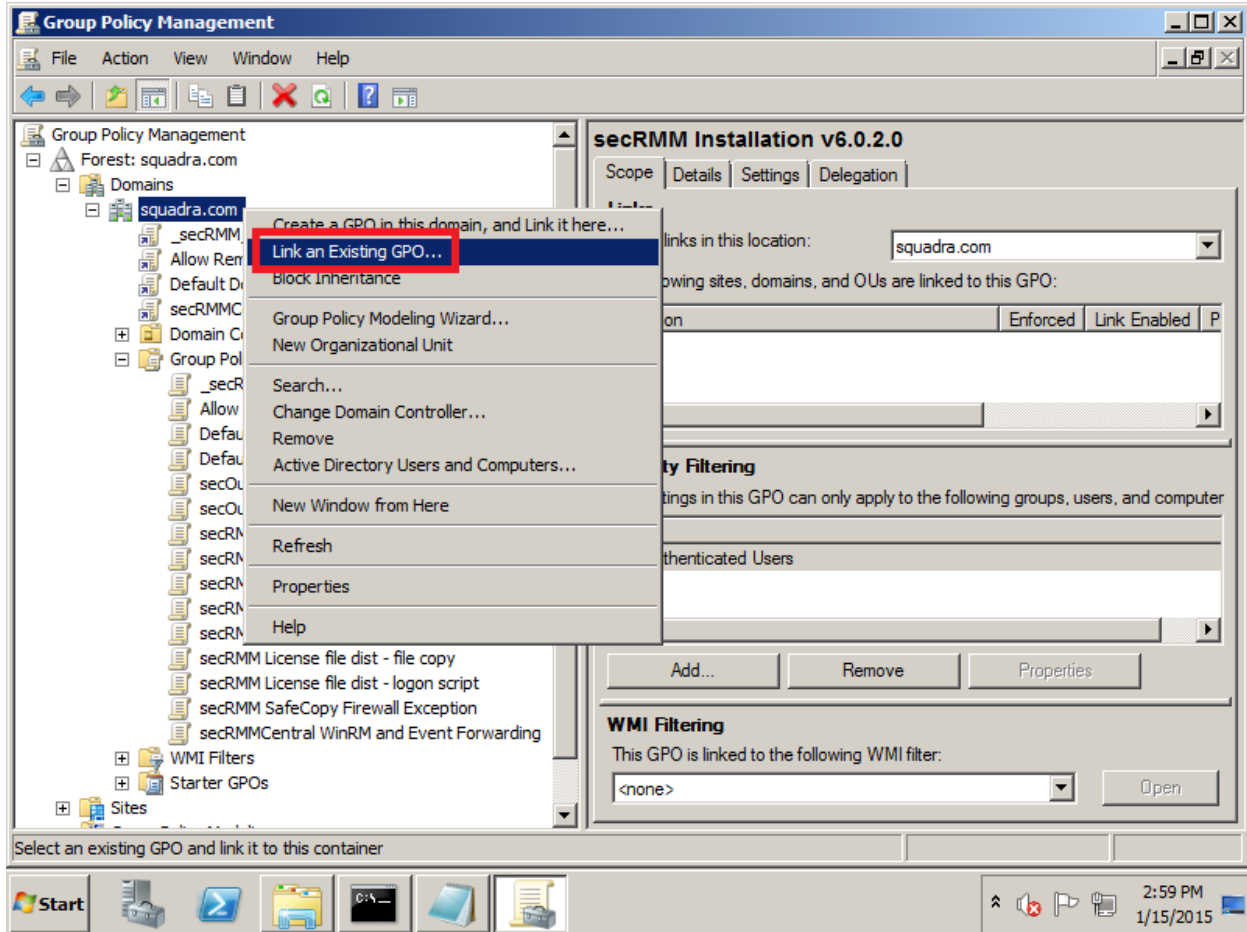


The secRMM Installation GPO is now complete. You can close the GPO Editor by clicking the X in the upper right hand corner of the dialog.



The final step is to “link” the GPO you just created to computers in your domain. In the screenshot below, we will link the GPO so that all the computers in the domain get secRMM installed.

secRMM Active Directory Installation Guide



Customizing the installation

You can customize the Group Policy software installation by specifying Microsoft Transform files (MST). secRMM supplies a MST file for each property (variable) that can be overridden at the command line. The name of the MST file is also the name of the installation property. The secRMM MST files are in the secRMMDeployment.zip (in the MSI_Transforms directory) which you can download from the Squadra Technologies web site.

The MST files are:

- ADDSAFECOPYFIREWALLRULE.mst
- ARPSYSTEMCOMPONENT.mst
- PREVENTALLPROGRAMSPINNING.mst
- PREVENTSTARTMENUPINNING.mst
- REQUIRESAFECOPYPREAPPROVAL.mst
- SAFECOPYISALLOWEDPROGRAM.mst
- SECRMMLOCKDOWNMODE.mst

secRMM Active Directory Installation Guide

Linking the installation GPO

Now you are ready to associate this Group Policy Object to your domain. In the Group Policy Management console, right mouse click on your domain and select “Link an Existing GPO...”.

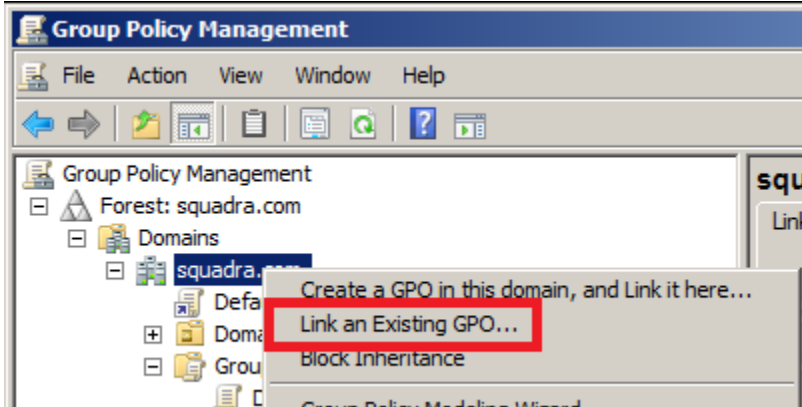


Figure 1 - Linking the software installation GPO to the domain

Select the “Install secRMM” GPO.

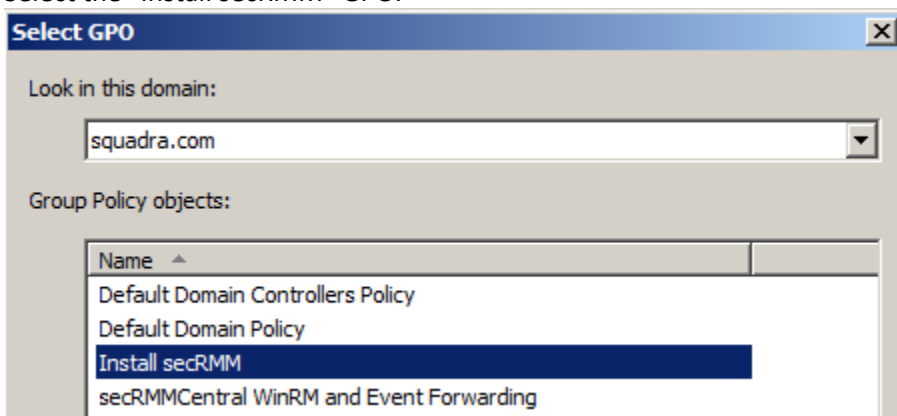
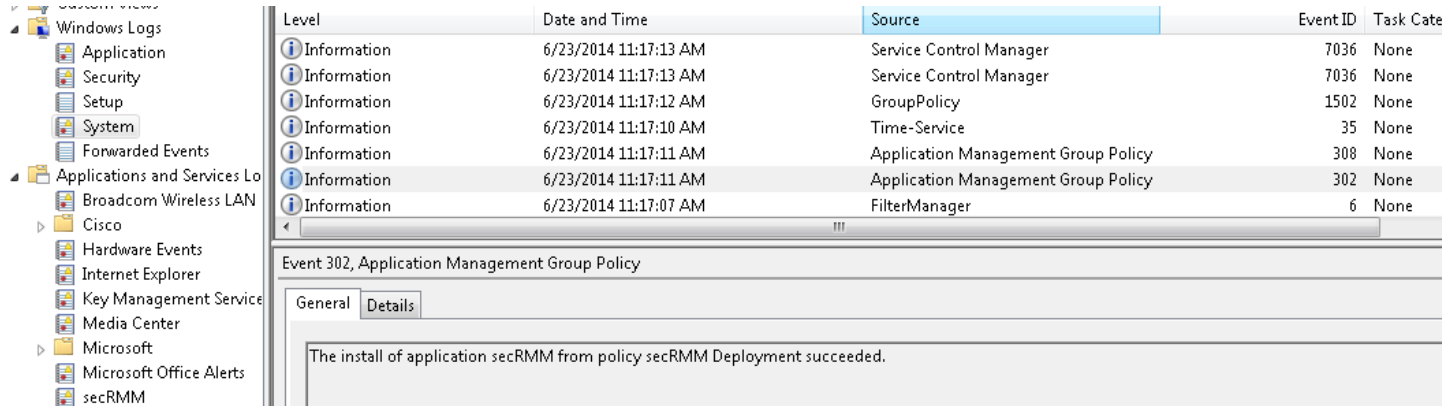


Figure 2 - Linking the "Install secRMM" GPO to the domain

To ensure that your GPO will work, choose a test system and run “gpupdate /force” from an elevated command prompt. This will apply the GPO to the system (i.e. install secRMM). You will need to reboot the system at this time.

Once the reboot has occurred, you can verify the installation by looking in the System event log for an Event ID of 302 for secRMM as shown below.

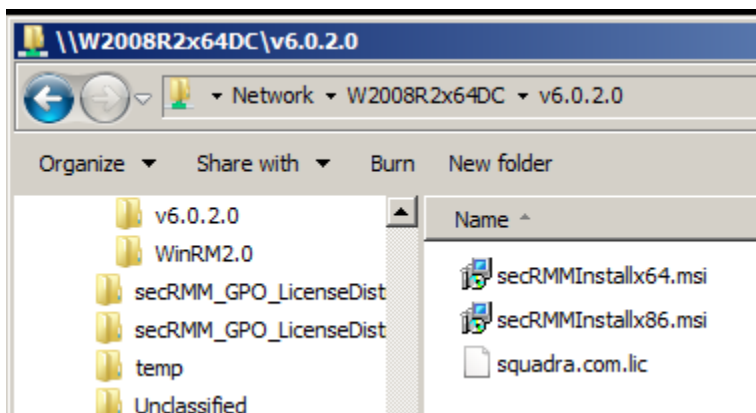
secRMM Active Directory Installation Guide



secRMM License file

The secRMM license file needs to be copied to each computer running secRMM in your environment. You receive the secRMM license file from Squadra Technologies. If you are deploying secRMM with Active Directory for a test and do not yet have a secRMM license file, you can skip this step. Once you do get a secRMM license file, you can come back to this section.

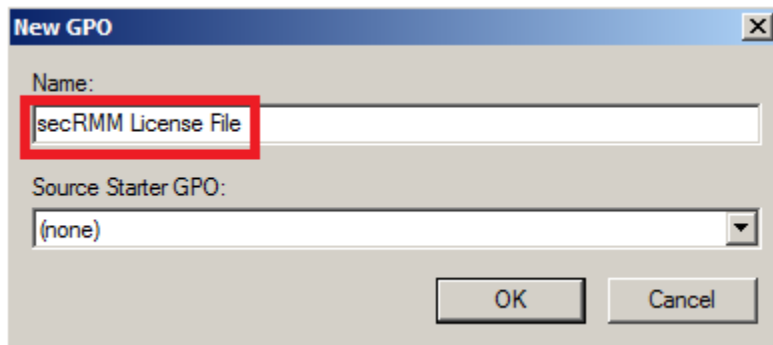
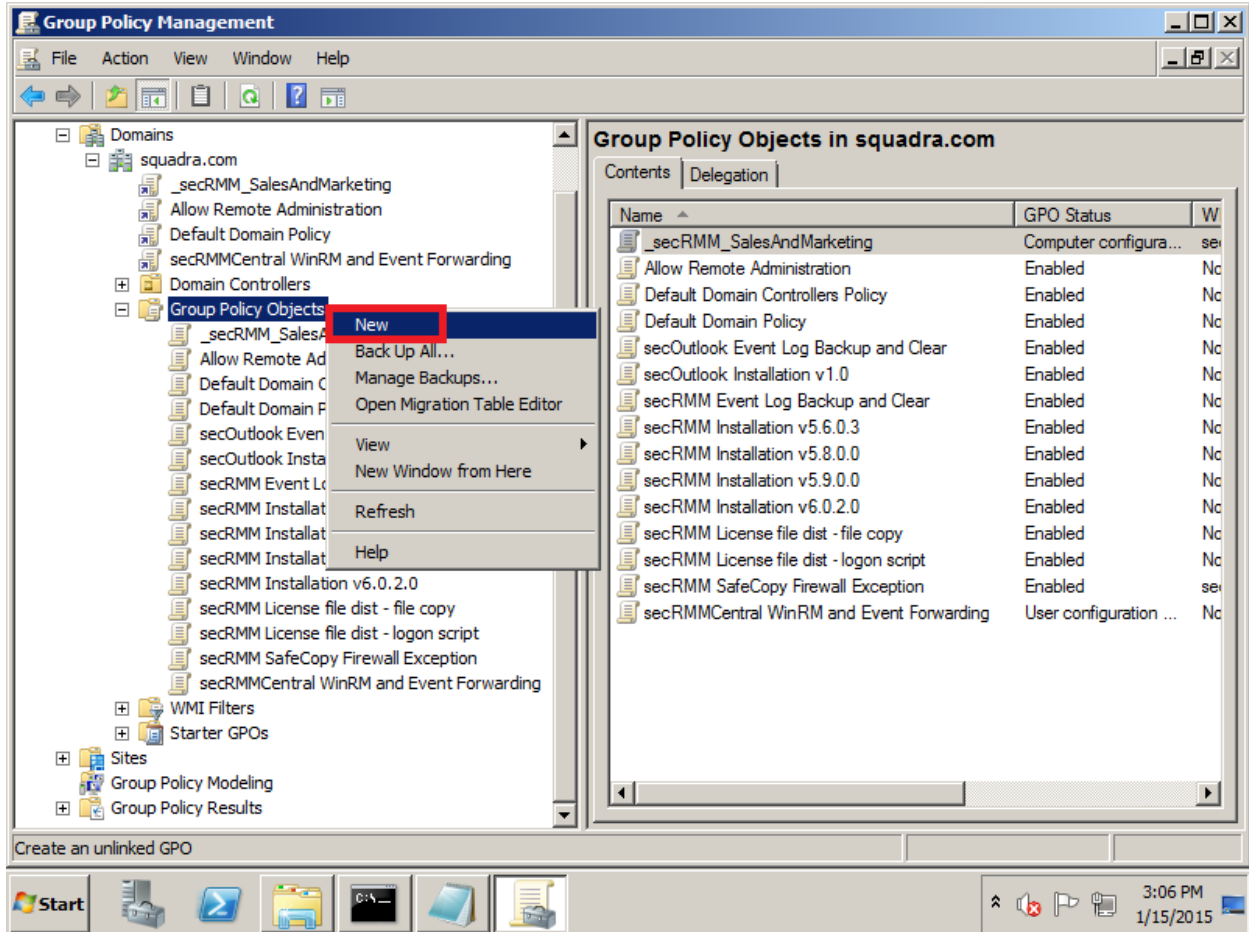
Under the network share we created earlier for the installation/deployment, put the secRMM license file into this folder. Your secRMM license file will have a name similar to your domain name, assuming you purchased a domain license². In this document, we will use the name **squadra.com.lic** for the license file. Be sure though that you change **squadra.com.lic** to be the actual file name you received from Squadra Technologies (we will point out each place you need to make a change below).



Right mouse click on “Group Policy Objects” and select “New”.

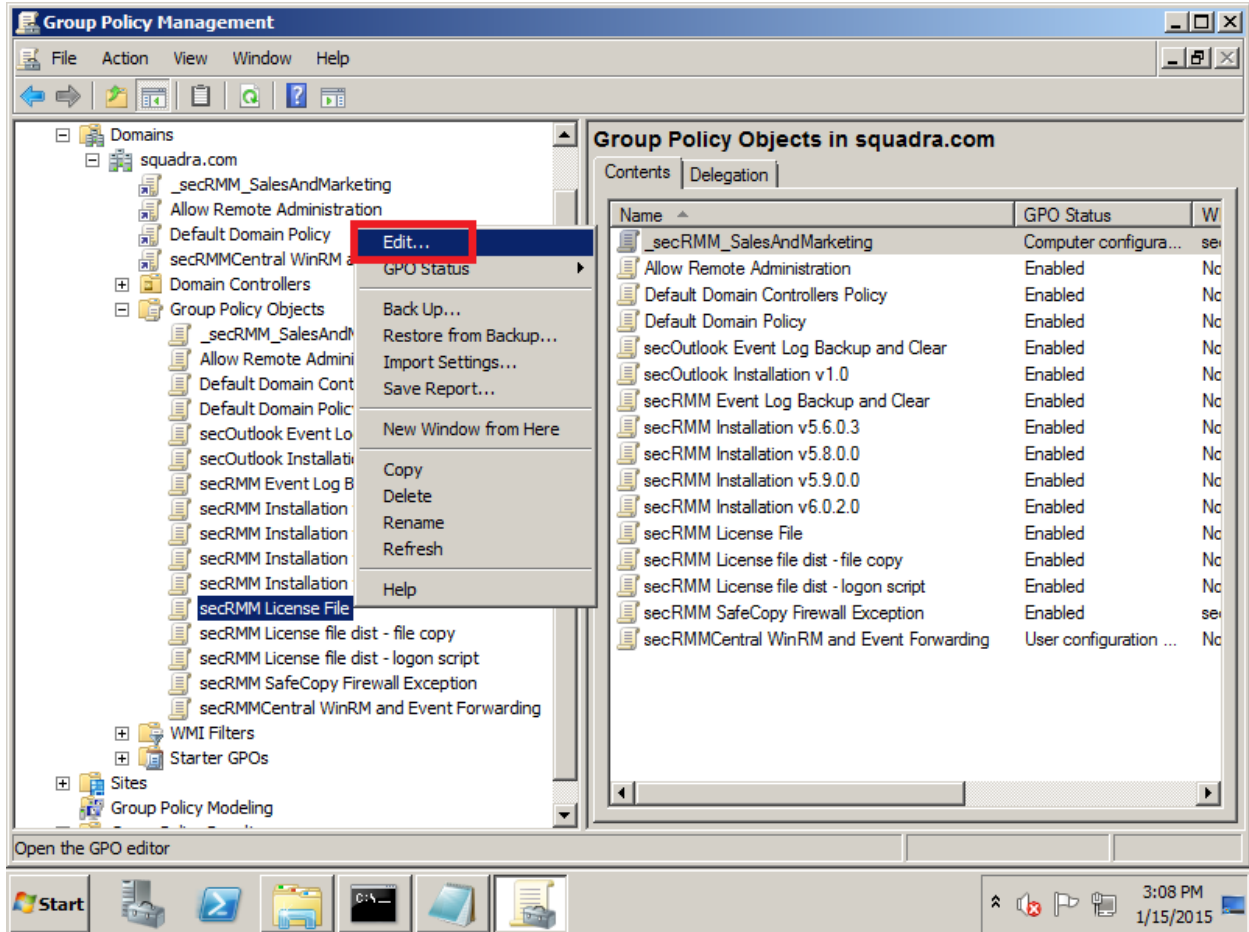
² If you purchased a “per computer” license, please use the steps in the secRMM Administrators Guide under the section named Licensing.

secRMM Active Directory Installation Guide



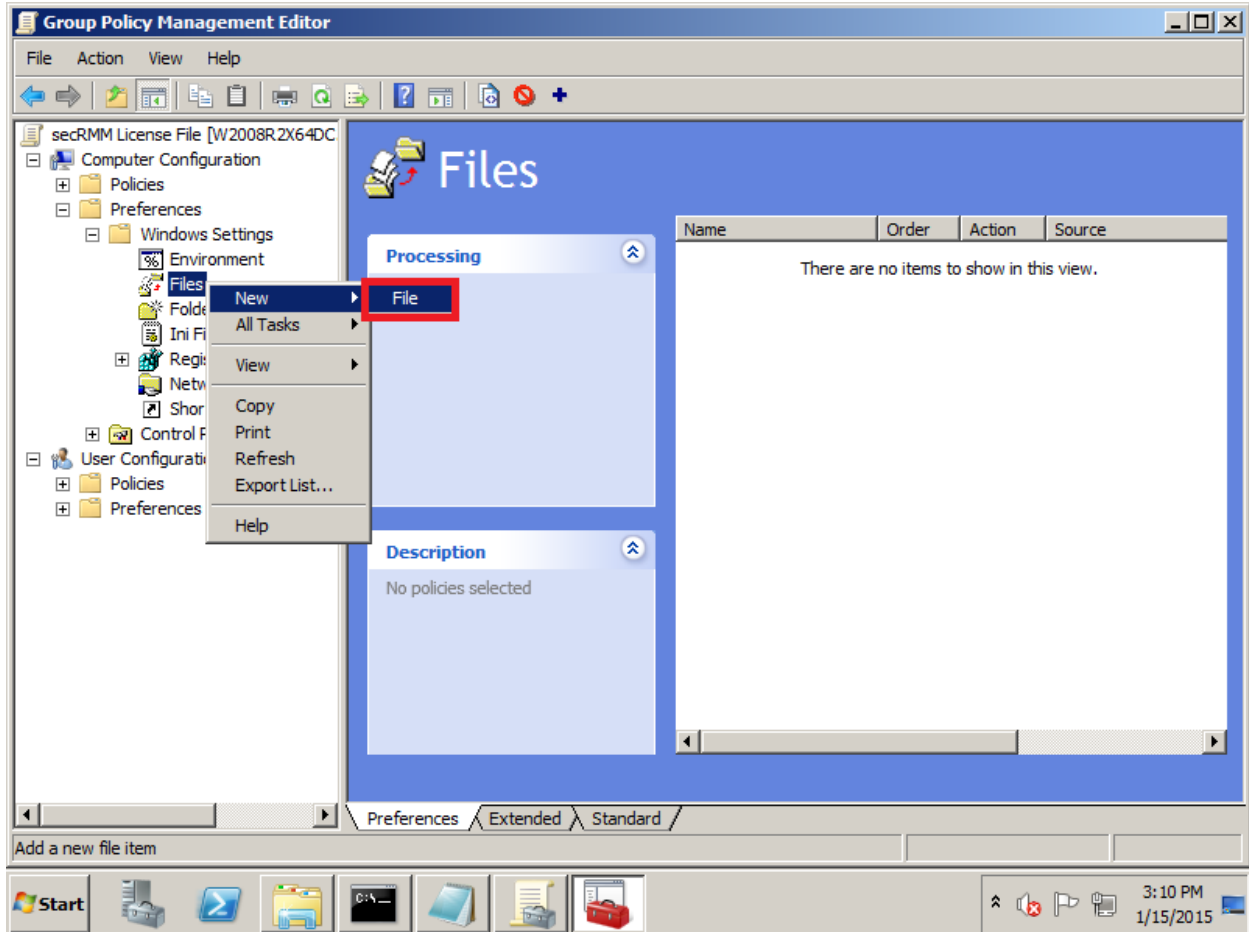
Right mouse click on the new GPO and select "Edit".

secRMM Active Directory Installation Guide

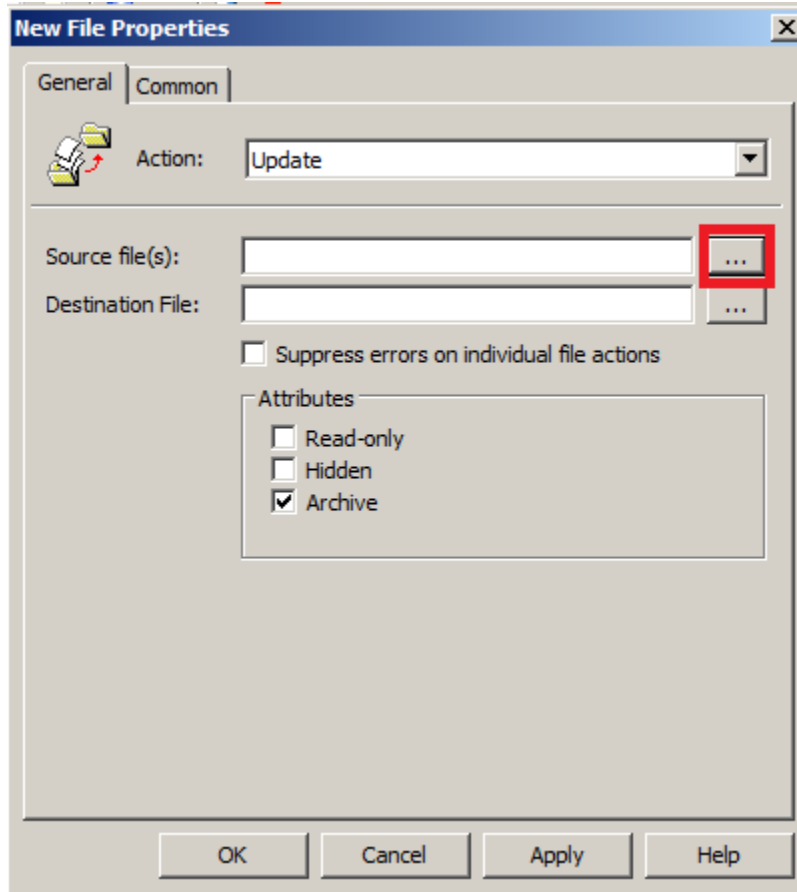


Expand the treeview to "Computer Configuration"->"Preferences"->"Windows Settings"->"Files"
Right mouse click on "Files" and from the pop up menu, select New->File.

secRMM Active Directory Installation Guide

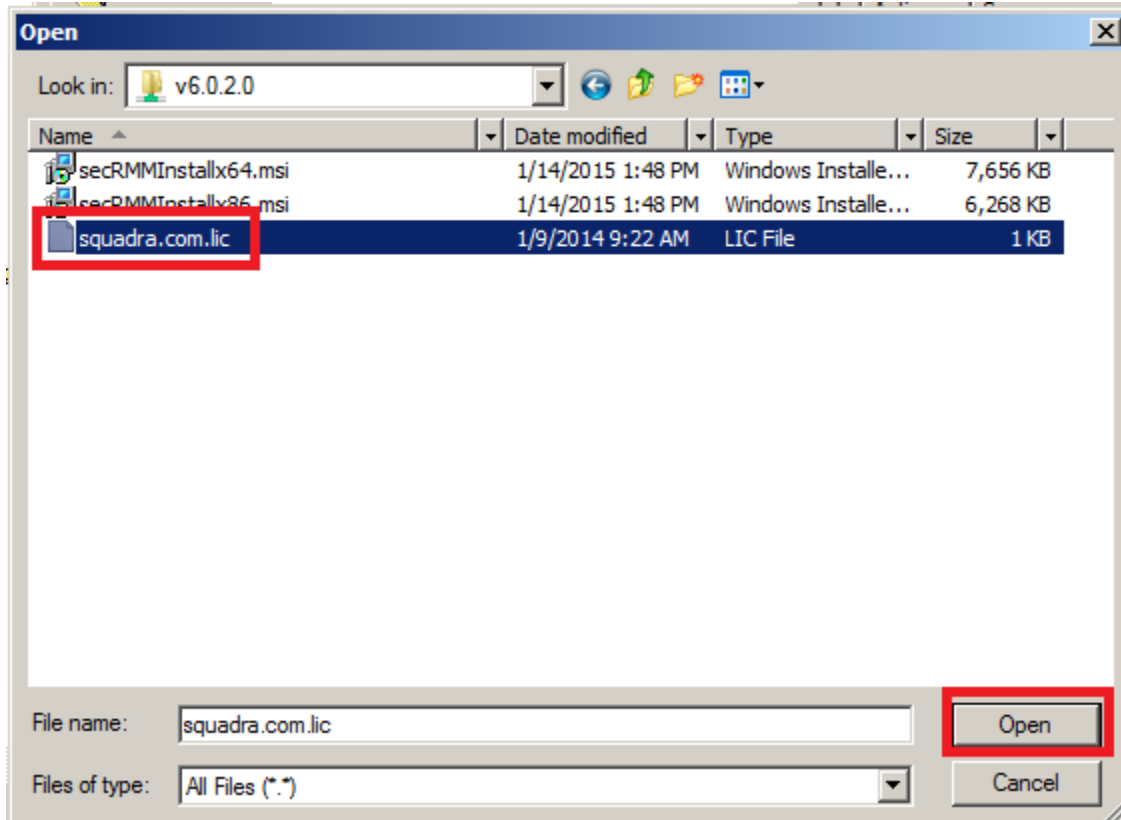


secRMM Active Directory Installation Guide



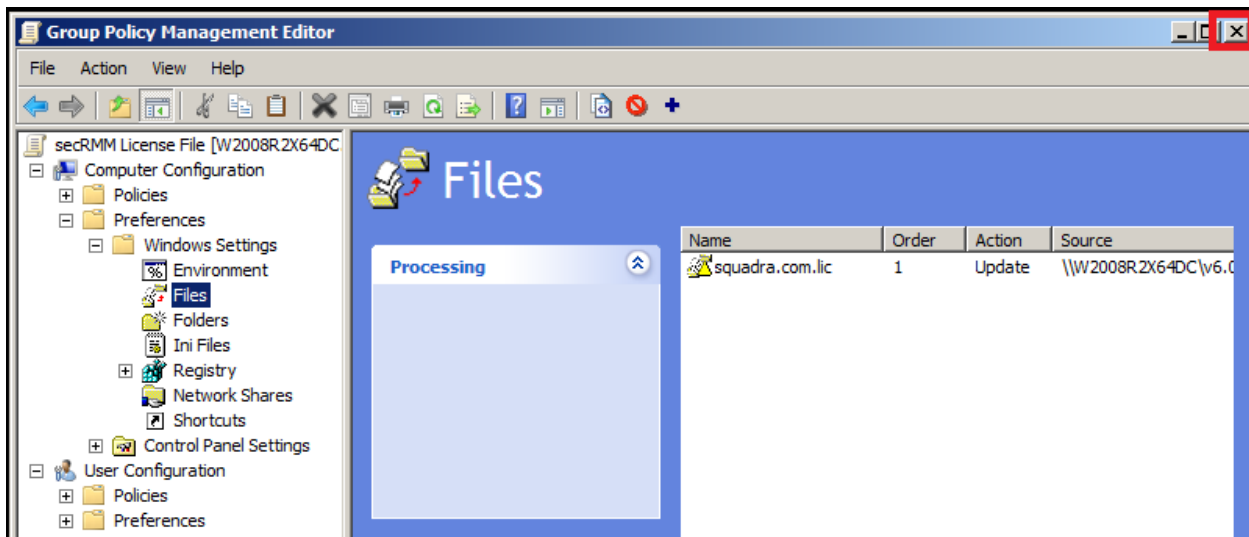
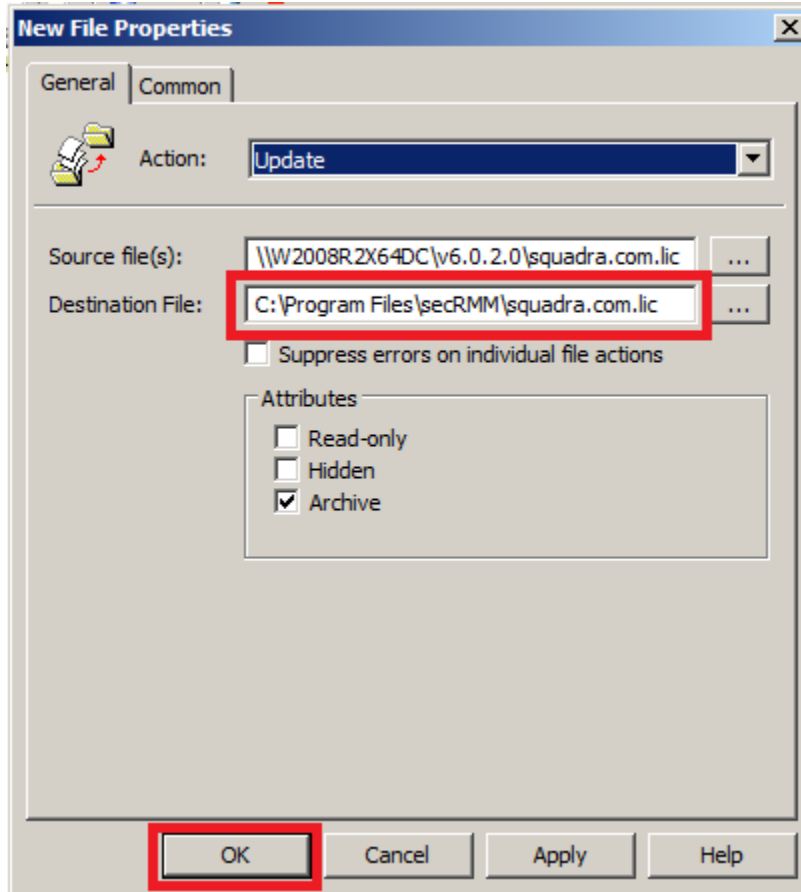
Remember, your license file name will be different than the screenshot below.

secRMM Active Directory Installation Guide



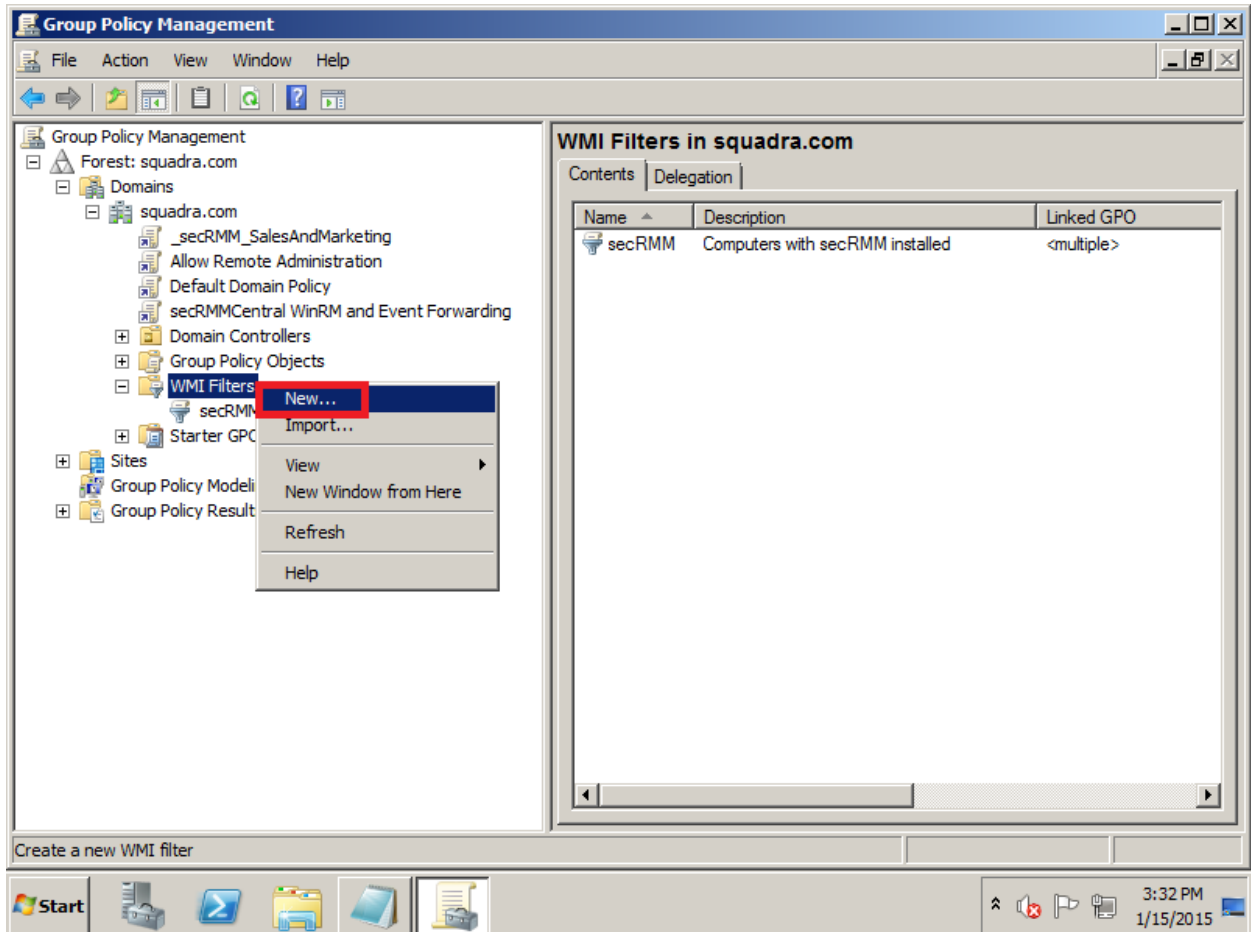
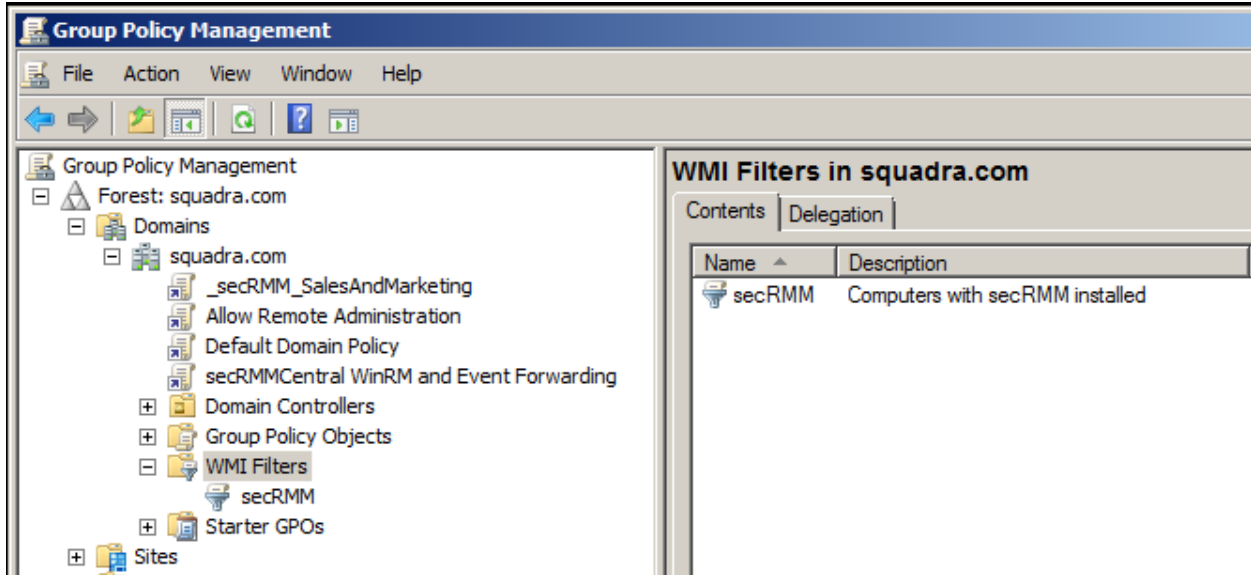
Now, in the “Destination File” field, type the directory and file name of the secRMM license file. The directory will be “C:\Program Files\secRMM\” (unless you specified a different installation directory in which case, you would use that directory named instead).

secRMM Active Directory Installation Guide

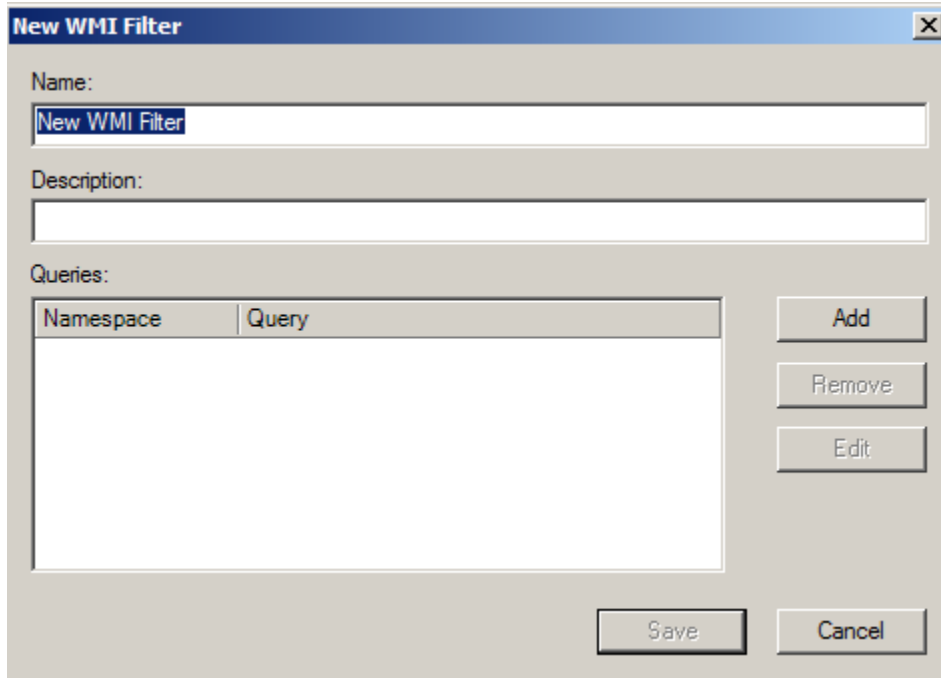


For this GPO, you will associate a WMI Filter to the GPO so that this GPO will only run on computers that have secRMM installed. Right mouse click on “WMI Filters” and select “New”

secRMM Active Directory Installation Guide



secRMM Active Directory Installation Guide



New WMI Filter

Name:
New WMI Filter

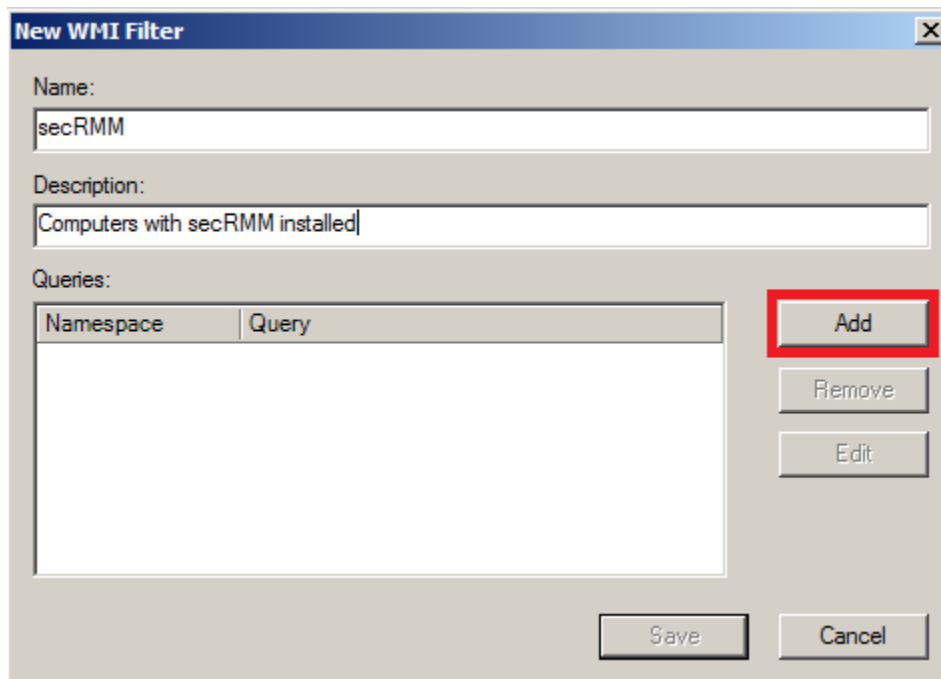
Description:

Queries:

Namespace	Query
-----------	-------

Add
Remove
Edit

Save Cancel



New WMI Filter

Name:
secRMM

Description:
Computers with secRMM installed

Queries:

Namespace	Query
-----------	-------

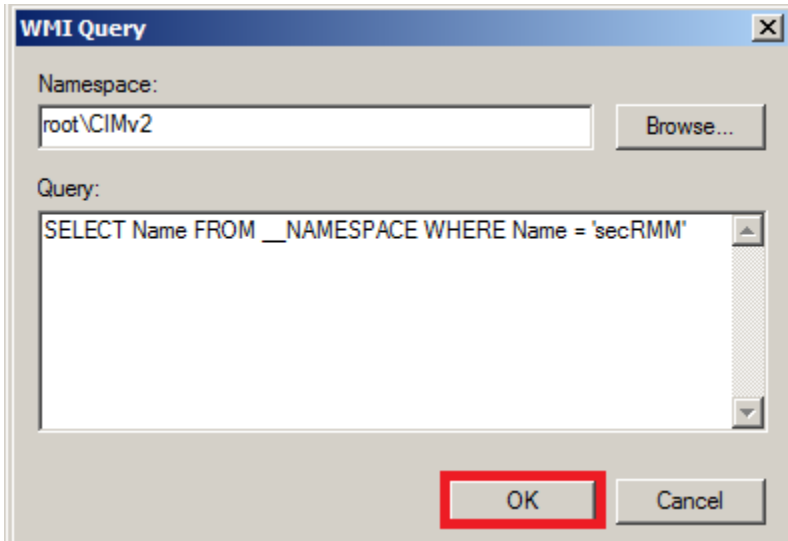
Add
Remove
Edit

Save Cancel

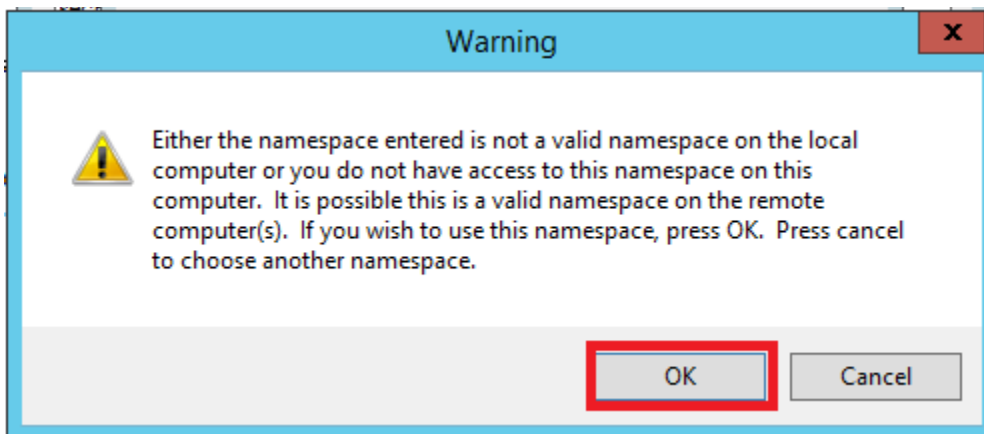
In the Query field, type (or cut and paste):

```
SELECT Name FROM __NAMESPACE WHERE Name = 'secRMM'
```

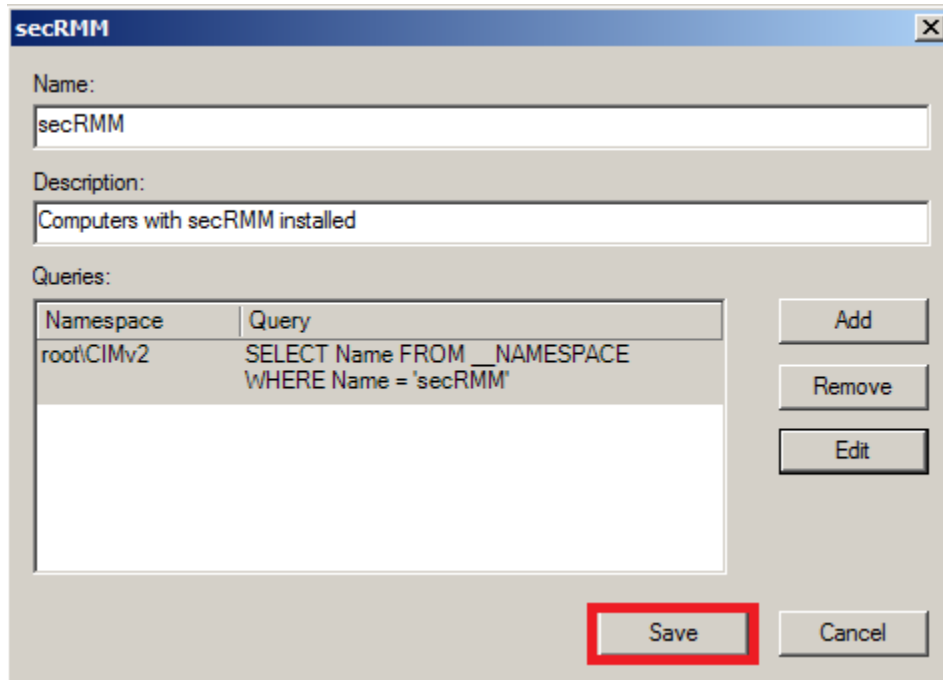
secRMM Active Directory Installation Guide



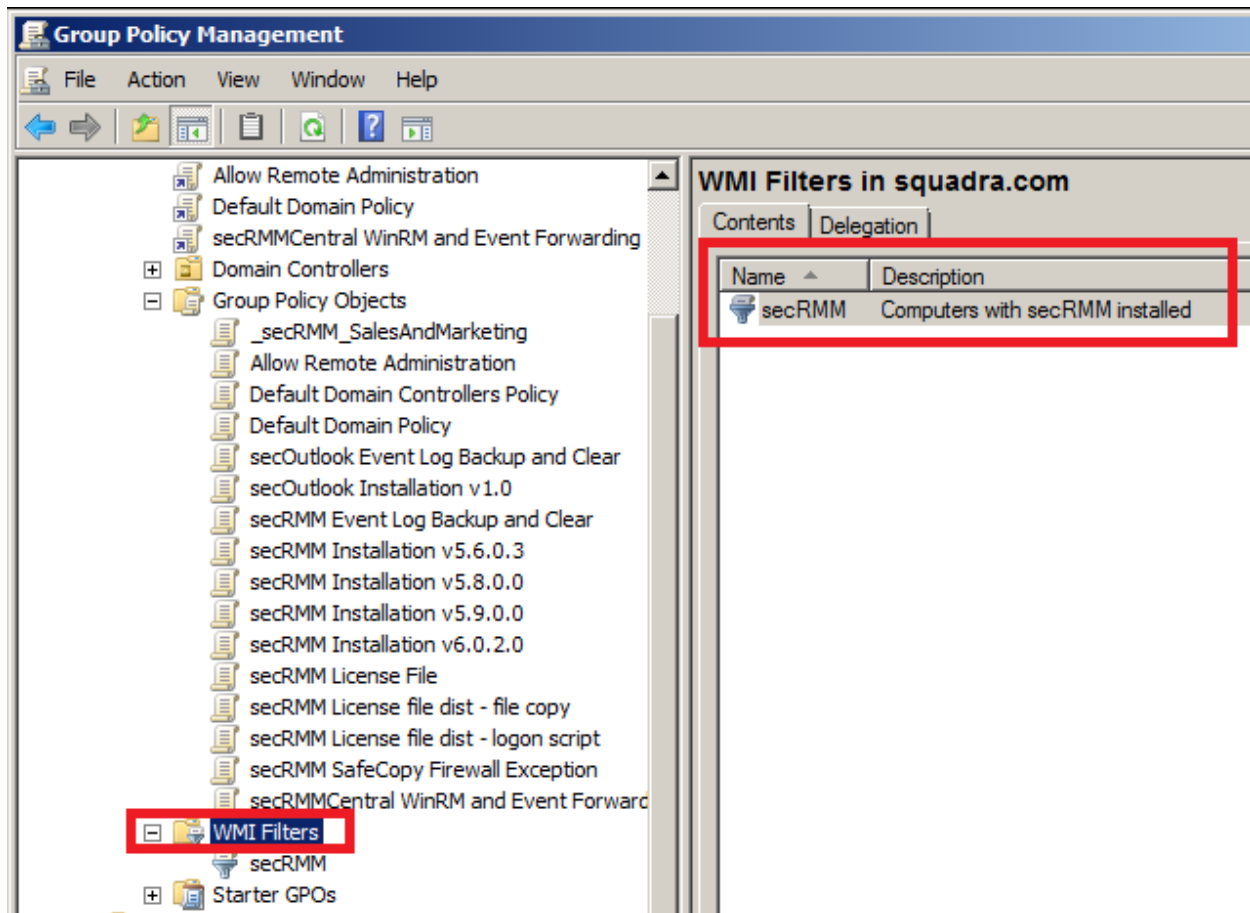
Note: There appears to be a bug in **Windows 2012 R2** that will show the following Warning. You can safely ignore this warning.



secRMM Active Directory Installation Guide

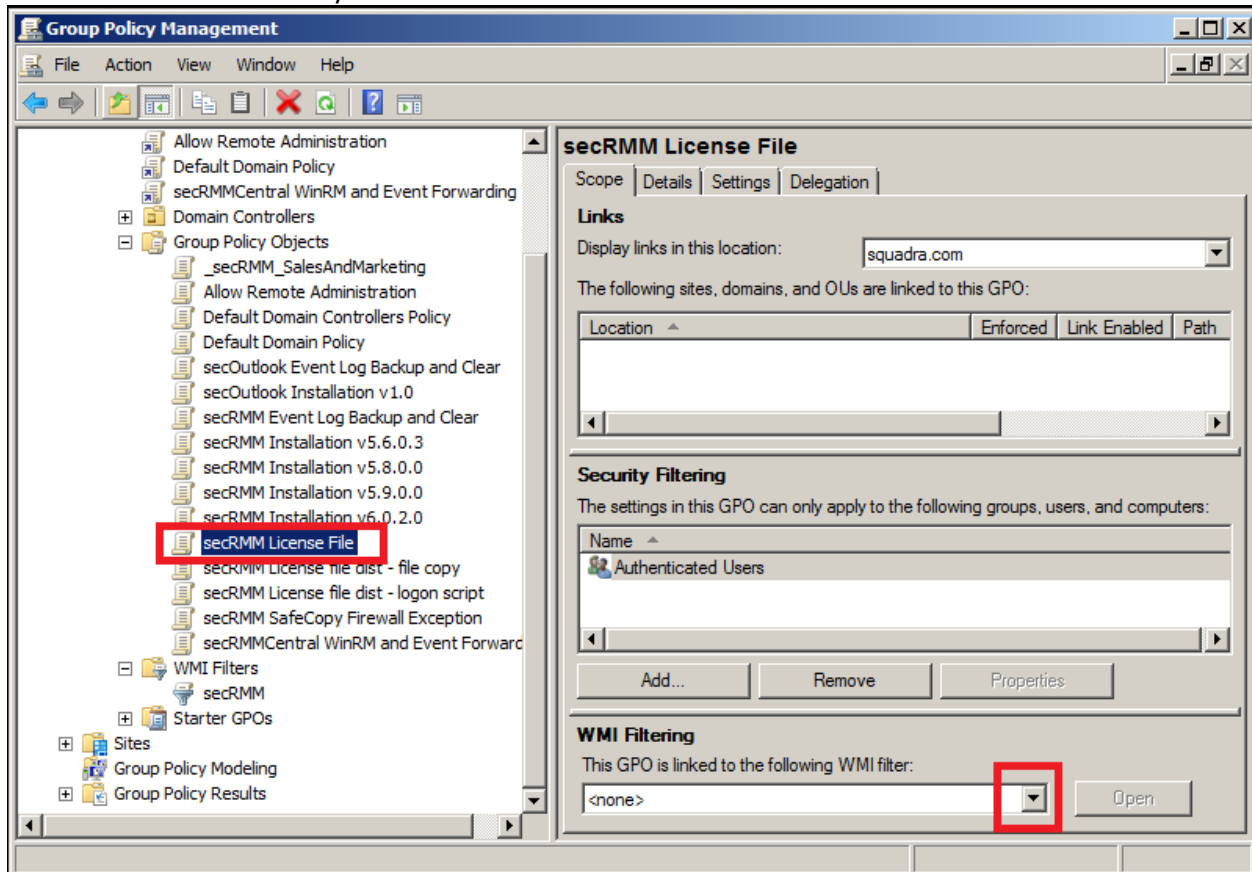


Now the GPO WMI Filter is created.



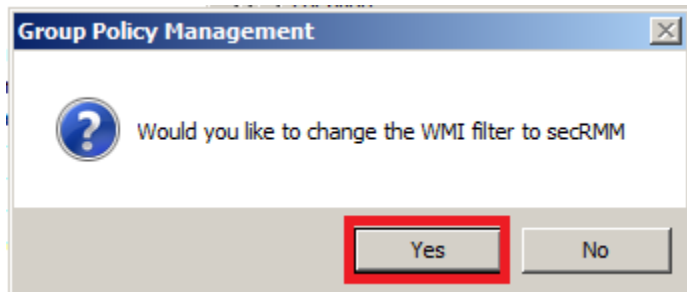
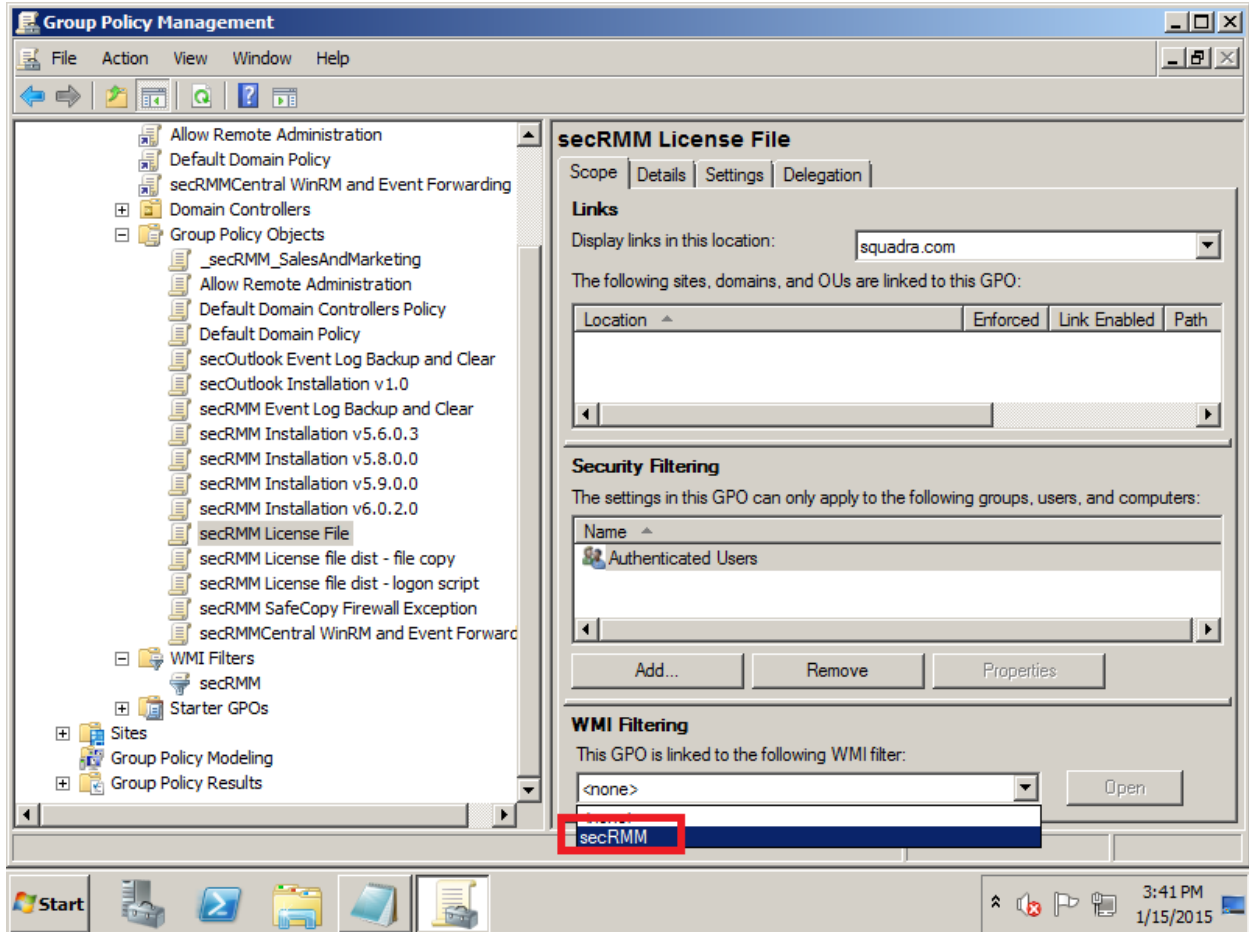
secRMM Active Directory Installation Guide

Now click back on the GPO you created.

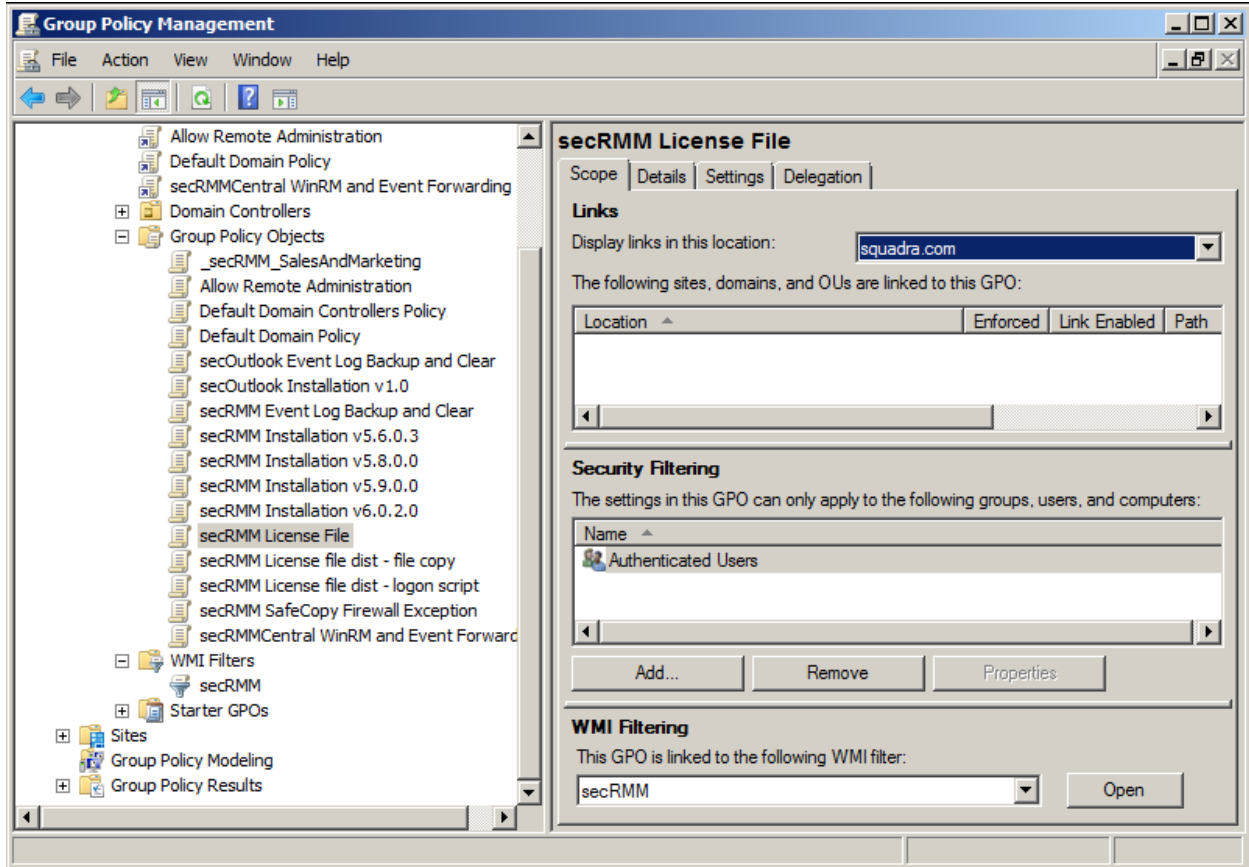


Select the secRMM WMI Filter you just created.

secRMM Active Directory Installation Guide



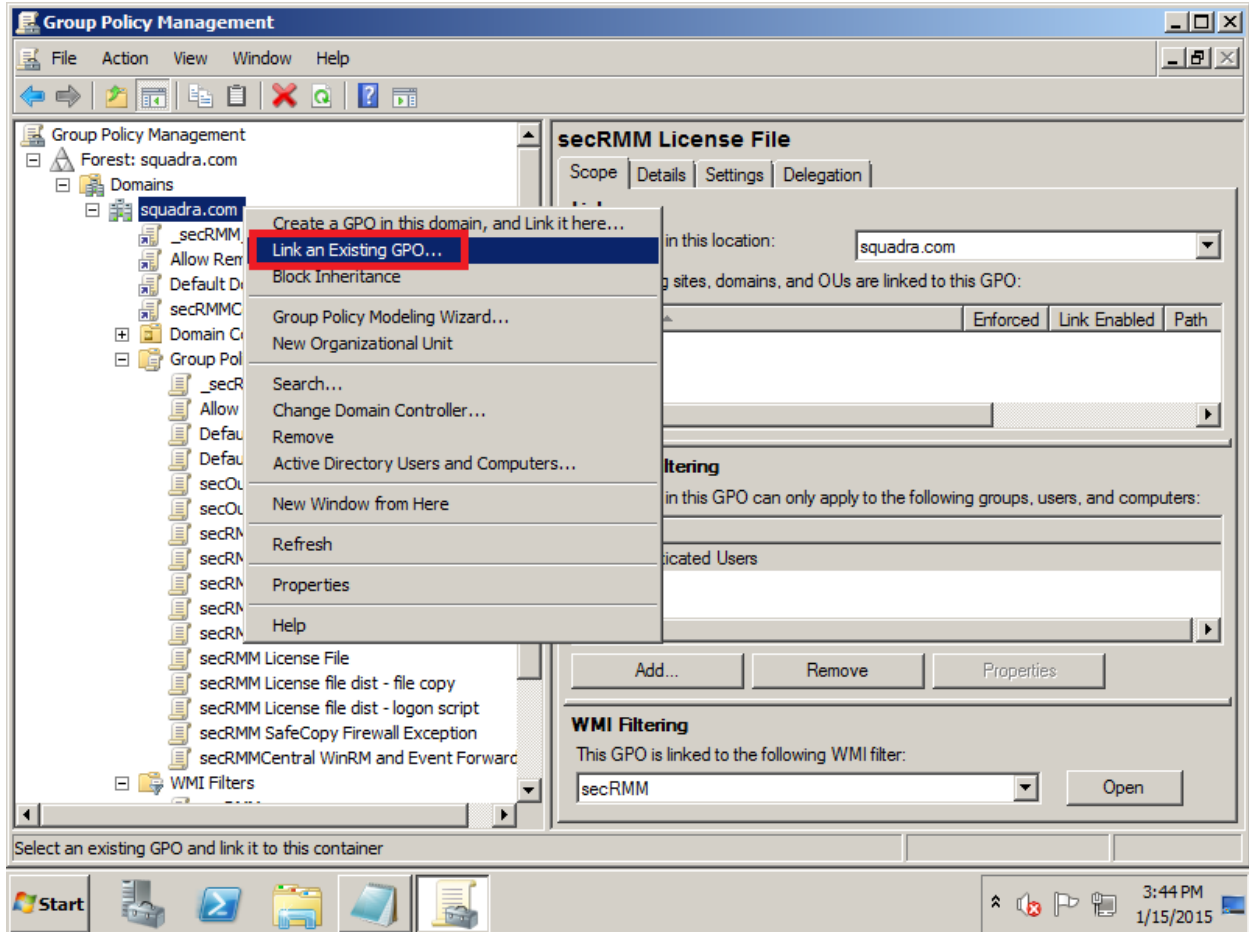
secRMM Active Directory Installation Guide



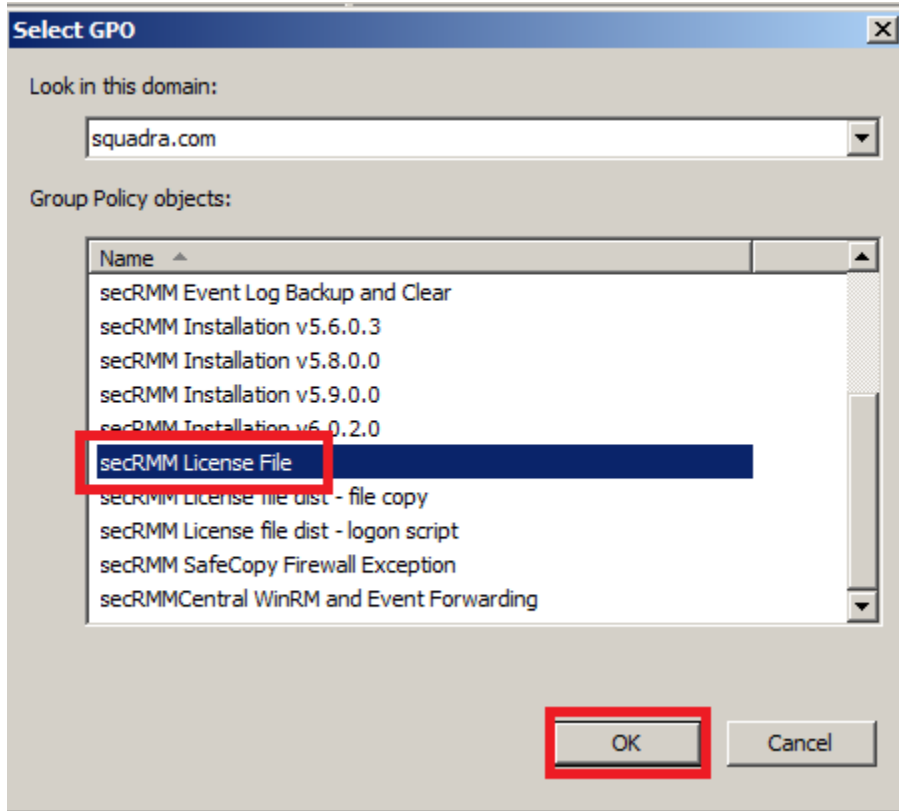
Linking the license file GPO

The final step is to “link” the GPO you just created to computers in your domain. In the screenshot below, we will link the GPO so that all the computers in the domain (with secRMM installed; this is because of the WMI Filter) get the secRMM license file copied to it.

secRMM Active Directory Installation Guide



secRMM Active Directory Installation Guide



Troubleshooting

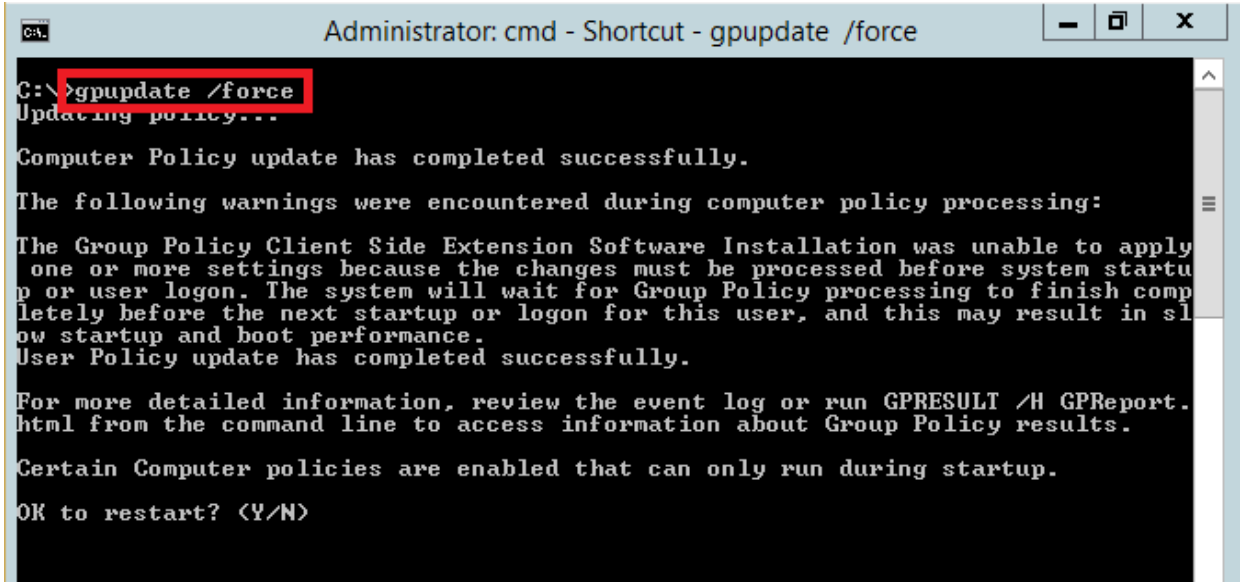
This section helps you troubleshoot your Active Directory environment when the software does not get deployed.

gpupdate and gpreresult

Microsoft gives you command line programs when working with Active Directory GPO. These programs are gpupdate and gpreresult.

To use gpupdate, go to a computer in the domain that is targeted to have the GPO applied to it. Open a CMD (DOS) window in Administrator mode (UAC). To force the GPOs to run, you type gpupdate /force. You will see output as shown below.

secRMM Active Directory Installation Guide

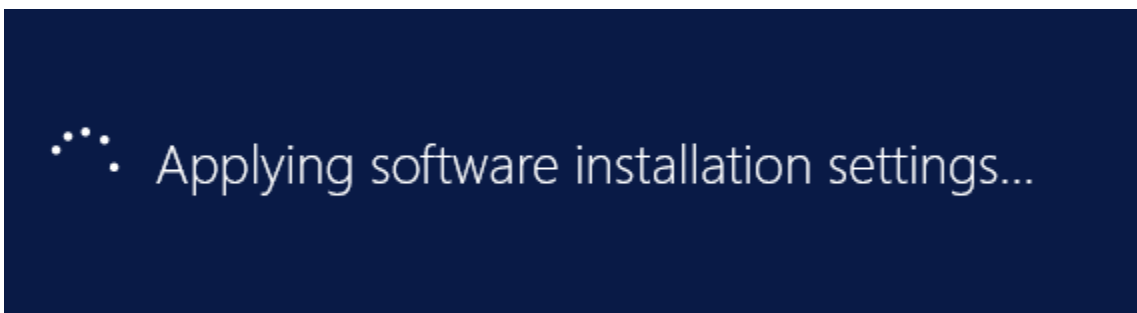


```
Administrator: cmd - Shortcut - gpupdate /force
C:\>gpupdate /force
Updating policy...
Computer Policy update has completed successfully.
The following warnings were encountered during computer policy processing:
The Group Policy Client Side Extension Software Installation was unable to apply
one or more settings because the changes must be processed before system startu
p or user logon. The system will wait for Group Policy processing to finish comp
letely before the next startup or logon for this user, and this may result in sl
ow startup and boot performance.
User Policy update has completed successfully.
For more detailed information, review the event log or run GPRESULT /H GPREport.
html from the command line to access information about Group Policy results.
Certain Computer policies are enabled that can only run during startup.
OK to restart? (Y/N)
```

You can respond that it is OK to restart the computer by typing the letter Y. When you type the Y, you will see Windows being the reboot.



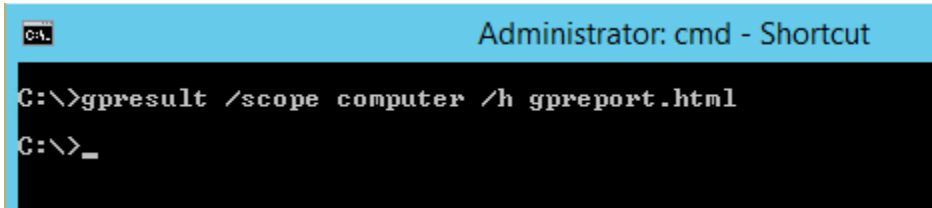
If you watch the screen while the computer is rebooting, you will see new software being installed as shown below.



Once the computer restarts, the GPO rules for the computer will be applied. You can check that the GPO was applied to the computer by using the gpreresult program.

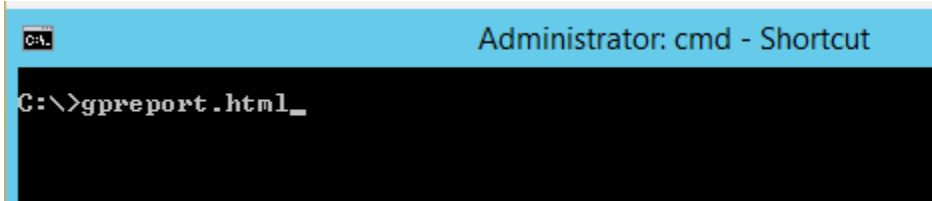
secRMM Active Directory Installation Guide

To use gpreport, open a CMD (DOS) window in Administrator mode (UAC). Type `gpreport /scope computer /h gpreport.html`³. The output of the gpreport is stored in the file `gpreport.html`.



```
C:\>gpreport /scope computer /h gpreport.html
C:\>_
```

Now, just type `gpreport.html` at the command line and Windows will invoke your default browser to display the `gpreport.html` file.



```
C:\>gpreport.html_
```

A browser will open. Look for the secRMM installation in the report as shown below.

³ You need to make sure the file `gpreport.html` does not already exist. If it does, just delete it or use a different name for the output file.

secRMM Active Directory Installation Guide

Computer Details

General

Computer name	CONTOSO\DC
Domain	CONTOSO.com
Site	Default-First-Site-Name
Organizational Unit	CONTOSO.com/Domain Controllers
Security Group Membership	show

Component Status

Component Name	Status	Time Taken	Last Process Time
Group Policy Infrastructure	Success	203 Millisecond(s)	1/20/2015 10:51:30 AM
Registry	Success	110 Millisecond(s)	1/20/2015 10:34:05 AM
secRMM Group Policy	Success (no data)	250 Millisecond(s)	1/20/2015 10:46:29 AM
Security	Success	1 Second(s) 281 Millisecond(s)	1/20/2015 10:34:06 AM
Software Installation	Success	13 Second(s) 141 Millisecond(s)	1/20/2015 10:41:29 AM

Settings

Policies

Software Settings

Installed Applications

secRMM x64

Winning GPO secRMM Installation v6.0.3.0

Product Information

Name	secRMM x64
Version	6.0
Language	English (United States)
Platform	x64
Support URL	

Deployment Information

General	Setting
Deployment type	Assigned
Deployment source	\\DC\v6.0.3.0\secRMMInstallx64.msi
Uninstall this application when it falls out of the scope of management	Enabled

If you do not see the secRMM installation in the report, then it is likely that when you associated the GPO to the computers in your domain, this computer was not in the group you targeted. Please contact Squadra Technologies support and we can help you troubleshoot further.

Windows 7

If you find that the secRMM GPO install is failing on Windows 7, look for event id 1055 in the System event log. If there is an event id 1055 in the System event log, please follow the Microsoft KB article <https://support.microsoft.com/en-us/kb/2421599> to resolve the issue.

Contacting Squadra Technologies Support

Squadra Technologies Support is available to customers who have purchased a commercial version of secRMM and have a valid maintenance contract or who are in a trial mode of the product.

When you contact Support please include the following information:

1. The version of secRMM you have installed.

secRMM Active Directory Installation Guide

2. The Windows versions you have installed: XP, 2003 Server, 2008 Server R2, Vista, Windows 7, etc.
3. The version of Active Directory server you have installed.
4. Whether the Windows Operating System is 32bit or 64bit.
5. The specific issue you are contacting support for.

About Squadra Technologies, LLC.

Squadra Technologies delivers innovative products that help organizations get more data protection within the computer infrastructure. Through a deep expertise in IT operations and a continued focus on what works best, Squadra Technologies is helping customers worldwide.

Contacting Squadra Technologies, LLC.

Phone	562.221.3079 (United States and Canada)
Email	info@squadratechnologies.com
Mail	Squadra Technologies, LLC. World Headquarters 7575 West Washington Ave. Suite 127-252 Las Vegas, NV 89128 USA
Web site	http://www.squadratechnologies.com/